



SOBHA SEAHAVEN

TOWER B

# Table of Content

---

10

Introducing Tower B at Sobha SeaHaven

---

20

Interiors Renders

---

14

A new landmark

---

24

Amenities

---

16

Waterfront living redefined

---

34

Location Map

---

18

The Truth is in the detail

---

36

Site Plan

---

## *Floor & Unit plan Layouts*

---

39

Floor plan Layout - Tower B

---

40

2 Bedroom Apartment - Type E

---

41

2 Bedroom Apartment - Type F

---

42

2 Bedroom Apartment - Type G

---

43

2 Bedroom Apartment - Type H

---

44

1 Bedroom + Study Apartment - Type D

---

45

1 Bedroom Apartment - Type E

---

46

1 Bedroom Apartment - Type F

---

47

1 Bedroom + Study Apartment - Type G

---



The sea has a  
new address





Take your imagination  
beyond the horizon



For illustrative purposes only



Wake up to the sounds of life  
by the water's edge



For illustrative purposes only





## A Symphony of Splendor and the Sea

Introducing a new tower at Sobha SeaHaven – where the horizon is as boundless as your dreams.

It's a mesmerizing oasis of luxury living nestled along the pristine Dubai Harbour.

\*For illustrative purposes only





\*For illustrative purposes only

WELCOME TO



SOBHA SEAHAVEN

TOWER B

The kaleidoscope of colors painted over the sky  
raises a toast to live life to the fullest.





## A new landmark in the seascape

After the stunning success of SeaHaven Tower A, comes a new opportunity at Sobha SeaHaven Tower B.

It's a whole new tower rising from the heart of Dubai Harbor with views of Palm Jumeirah and Ain Dubai.





The stunning backdrops of sea, mesmerising skyline,  
and vibrant city make it a story to be told.

Glancing at the landmarks, Sobha SeaHaven Tower B  
is a waterfront living redefined.



The truth is  
in the details

SeaHaven tower's sail-inspired design against the canvas of the sea and sleek silhouette creates a sense of movement. It takes cues from the elegant superyachts with their fluid lines and clean angles. Capturing the essence of the sea.

To make a statement, the facade blends high-quality materials, rich woods, refined metals, glass, and steel.



\*For illustrative purposes only





\*For illustrative purposes only

From the foyer, enter your exquisitely designed suite. Its open-concept layout and floor-to-ceiling windows mimic the panoramic views from a yacht's deck.

Every element is designed for timeless elegance - sumptuous furnishings, custom millwork, and handcrafted cabinetry makes the difference between ordinary and extraordinary living.



Twice is nice

The Sealaven towers are connected by a stunning sky bridge,  
giving you twice the experience.



For illustrative purposes only





\*For illustrative purposes only

Where  
Amenities  
become essentials

At SeaHaven Tower B, your every desire is met with effortless grace.  
Extravagance knows no bounds, and every whim is catered to.

Surrender to blissful rejuvenation. Let your senses be tantalized.  
Here over-the-top indulgences are not luxuries but the essence.



Indoor and Outdoor  
Amenities



SOBHA SEAHAVEN





Health club with Sauna & Steam  
Changing Room

Indoor Cinema



Indoor Game Room  
Serviced Club Lounge



Indoor Gym





Pool Deck



Yoga Zone / Meditation Zone

Infinity edge leisure pool facing harbor  
with kid's pool



Day Bed





Outdoor Gym



Family Zone with Barbeque Area

Outdoor Kids' Play Area

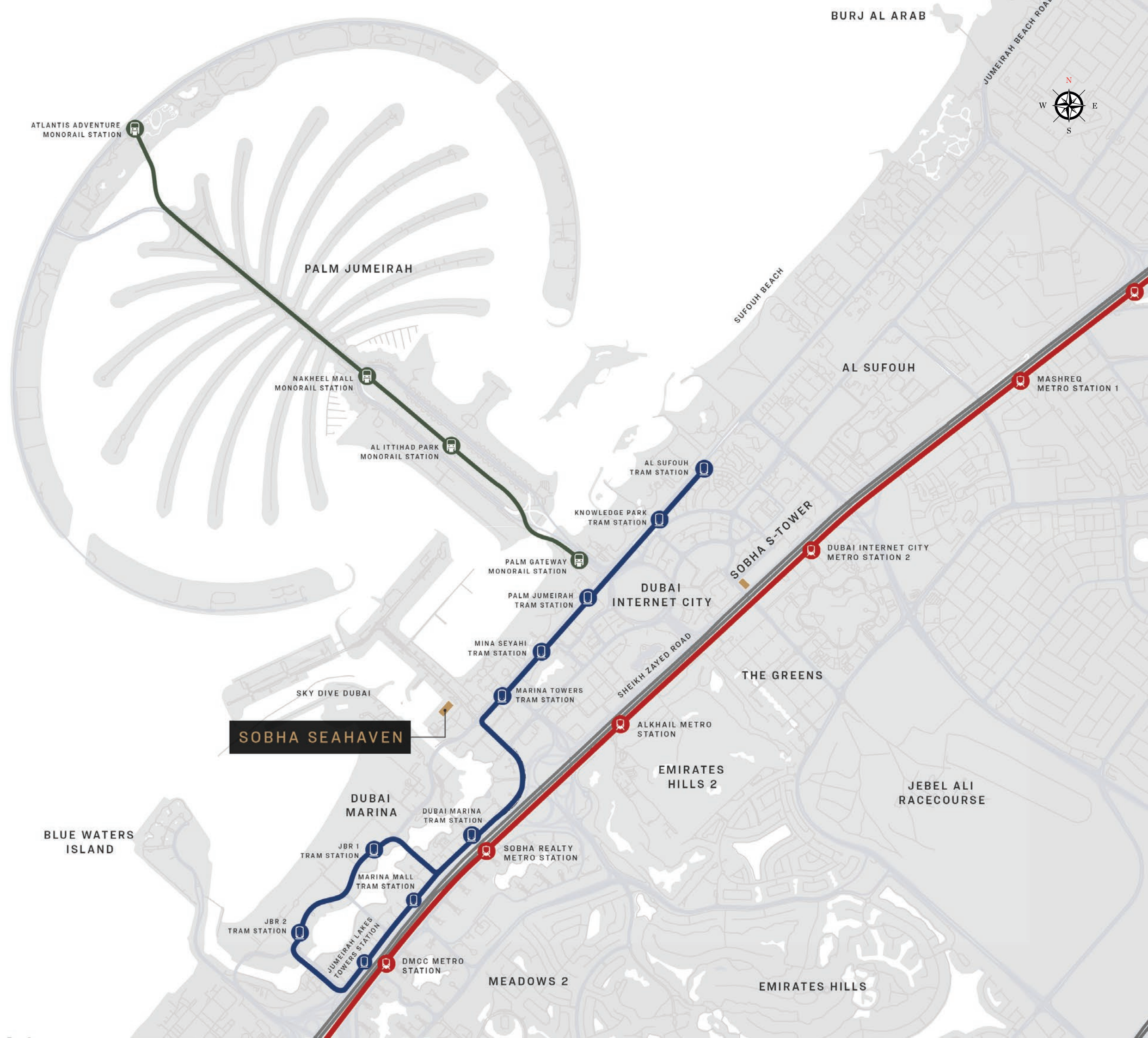


Outdoor Cinema





# Location Map







Site Plan



FLOOR AND UNIT PLAN  
LAYOUTS

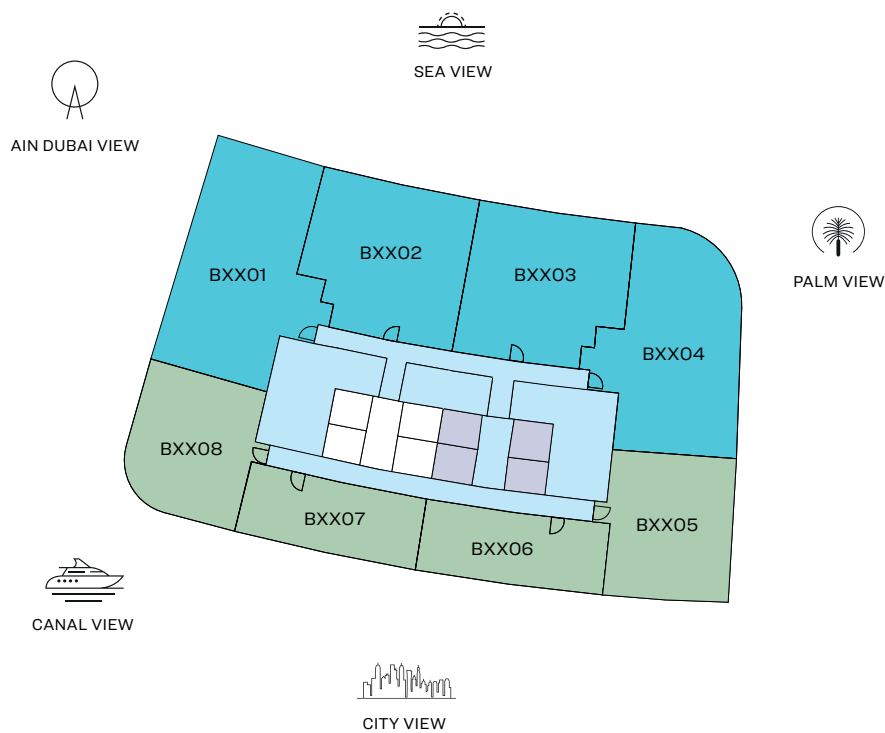


SOBHA SEAHAVEN



# FLOOR PLAN LAYOUT

## TOWER B



LEVEL 11 - 31

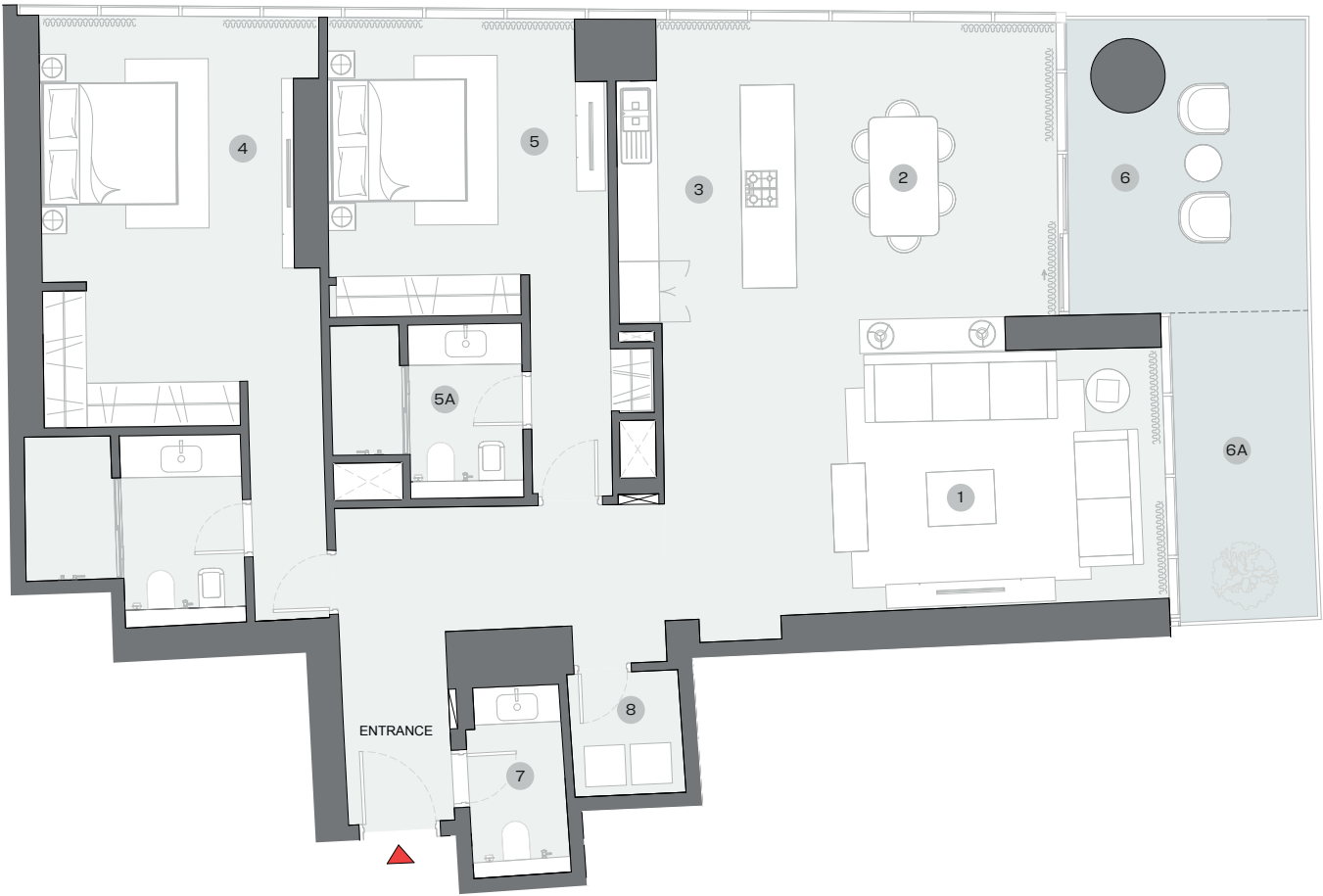
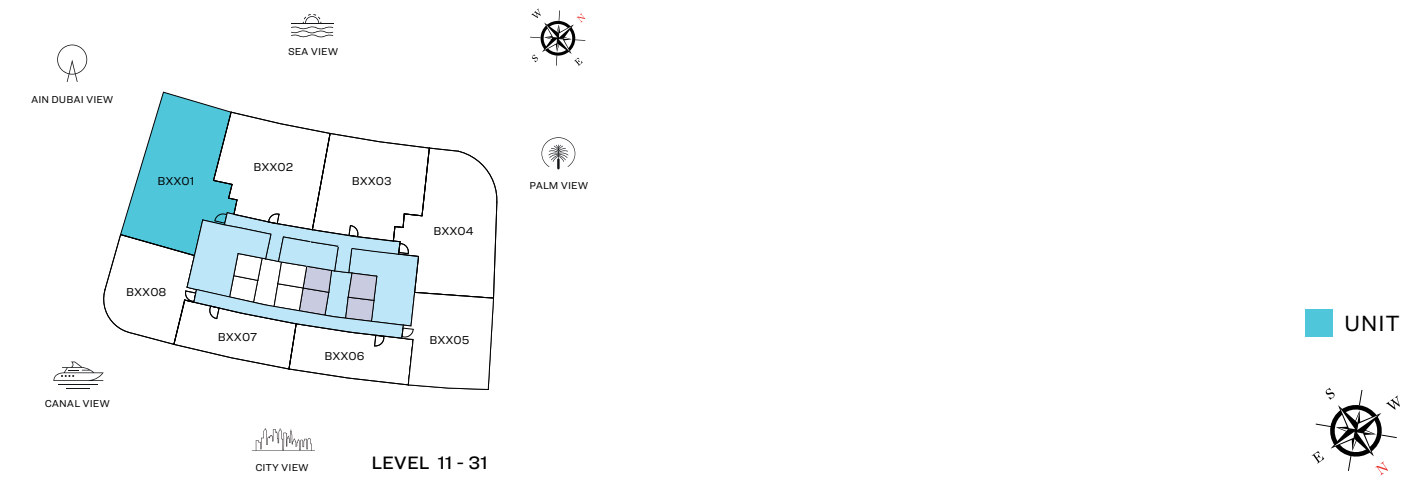
- 1 BED UNIT
- 2 BED UNIT
- LOBBIES, CORRIDORS & STAIRS
- LIFTS

Disclaimer: 1. All dimensions are in metric, measured to wall finishes. 2. All materials, dimensions & drawings are approximate. 3. Information is subject to change without notice, at developer's absolute discretion. 4. Actual area may vary from the stated area. 5. Drawing are not to scale. 6. All images used are for illustrative purpose only and do not represent the actual size, features, specifications, fittings and furnishings. 7. The developer reserves the right to make revisions/ alterations, at its absolute discretion, without any liability whatsoever.



2 BEDROOM APARTMENT  
TYPE E (with powder room + balcony)

TOTAL SALEABLE AREA  
SUITE = 1,749.78 SQ.FT.  
BALCONY = 273.30 SQ.FT.  
TOTAL = 2,023.08 SQ.FT.



List of unit numbers with this unit plan:

VIEWS

Blue waters, Ain Dubai, Palm Jumeirah, Harbour, Sea, Skydive  
B1101, B1201, B1301, B1401, B1501, B1601, B1701, B1801, B1901,  
B2001, B2101, B2201, B2301, B2401, B2501, B2601, B2701, B2801,  
B2901, B3001, B3101

DIMENSIONS (MM)

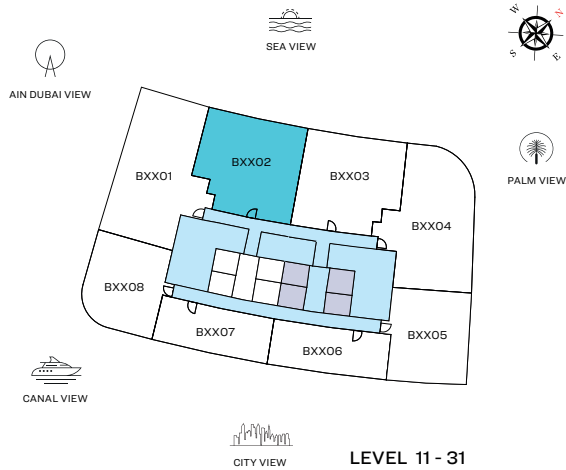
- |                         |                                  |                            |
|-------------------------|----------------------------------|----------------------------|
| 1 LIVING - 7400 X 3700  | 4 MASTER BEDROOM - 3700 X 5350   | 6 BALCONY 1 - 3500 X 4300  |
| 2 DINING - 3850 X 4800  | 4A MASTER BATHROOM - 3200 X 2850 | 6A BALCONY 2 - 2000 X 4500 |
| 3 KITCHEN - 2600 X 4000 | 5 BEDROOM 2 - 4100 X 4000        | 7 POWDER - 1450 X 3000     |
|                         | 5A BATHROOM 2 - 2800 X 2550      | 8 UTILITY - 1650 X 1850    |

Disclaimer: 1. All dimensions are in metric, measured to wall finishes. 2. All materials, dimensions & drawings are approximate. 3. Information is subject to change without notice, at developer's absolute discretion. 4. Actual area may vary from the stated area. 5. Drawing are not to scale. 6. All images used are for illustrative purpose only and do not represent the actual size, features, specifications, fittings and furnishings. 7. The developer reserves the right to make revisions/ alterations, at its absolute discretion, without any liability whatsoever.



2 BEDROOM APARTMENT  
TYPE F (with powder room + balcony)

TOTAL SALEABLE AREA  
SUITE = 1,273.48 SQ.FT.  
BALCONY = 396.76 SQ.FT.  
TOTAL = 1,670.24 SQ.FT.



UNIT



List of unit numbers with this unit plan:

VIEWS

Palm Jumeirah, Harbour, Sea  
B1102, B1202, B1302, B1402, B1502, B1602, B1702, B1802, B1902,  
B2002, B2102, B2202, B2302, B2402, B2502, B2602, B2702,  
B2802, B2902, B3002, B3102

DIMENSIONS (MM)

1 LIVING - 4200 X 4100	4 MASTER BEDROOM - 3900 X 4450	6 BALCONY 1 - 8100 X 3100
2 DINING - 4300 X 2800	4A MASTER BATHROOM - 3000 X 2600	6A BALCONY 2 - 4650 X 2000
3 KITCHEN - 2800 X 2500	5 BEDROOM 2 - 3650 X 3650	7 POWDER - 1800 X 2200
	5A BATHROOM 2 - 2600 X 2600	8 UTILITY - 850 X 1500

Disclaimer: 1. All dimensions are in metric, measured to wall finishes. 2. All materials, dimensions & drawings are approximate. 3. Information is subject to change without notice, at developer's absolute discretion. 4. Actual area may vary from the stated area. 5. Drawing are not to scale. 6. All images used are for illustrative purpose only and do not represent the actual size, features, specifications, fittings and furnishings. 7. The developer reserves the right to make revisions/ alterations, at its absolute discretion, without any liability whatsoever.



2 BEDROOM APARTMENT

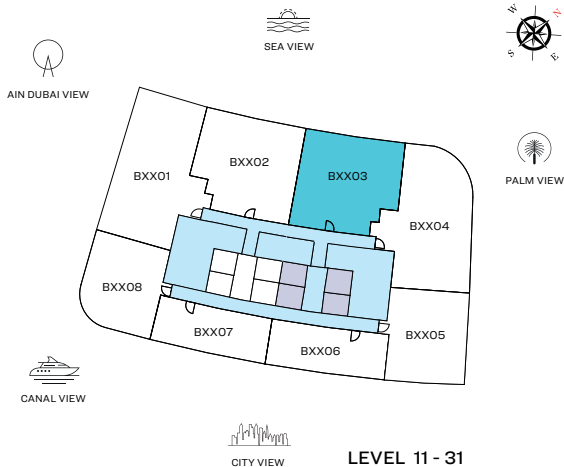
TYPE G (with powder room + balcony)

TOTAL SALEABLE AREA

SUITE = 1,270.57 SQ.FT.

BALCONY = 394.50 SQ.FT.

TOTAL = 1,665.07 SQ.FT.



UNIT



List of unit numbers with this unit plan:

VIEWS

Palm Jumeirah, Harbour, Sea  
B1103, B1203, B1303, B1403, B1503, B1603, B1703, B1803, B1903, B2003, B2103, B2203, B2303, B2403, B2503, B2603, B2703, B2803, B2903, B3003, B3103

DIMENSIONS (MM)

1 LIVING - 4150 X 4050	4 MASTER BEDROOM - 3800 X 4450	6 BALCONY 1 - 8000 X 3100
2 DINING - 4300 X 2800	4A MASTER BATHROOM - 3000 X 2600	6A BALCONY 2 - 4600 X 2000
3 KITCHEN - 2850 X 2500	5 BEDROOM 2 - 3800 X 3650	7 POWDER - 1850 X 1950
	5A BATHROOM 2 - 2600 X 2600	8 UTILITY - 850 X 1500

Disclaimer: 1. All dimensions are in metric, measured to wall finishes. 2. All materials, dimensions & drawings are approximate. 3. Information is subject to change without notice, at developer's absolute discretion. 4. Actual area may vary from the stated area. 5. Drawing are not to scale. 6. All images used are for illustrative purpose only and do not represent the actual size, features, specifications, fittings and furnishings. 7. The developer reserves the right to make revisions/ alterations, at its absolute discretion, without any liability whatsoever.

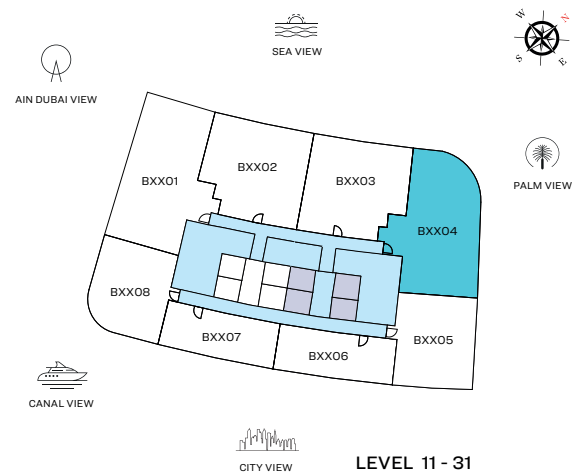


2 BEDROOM APARTMENT

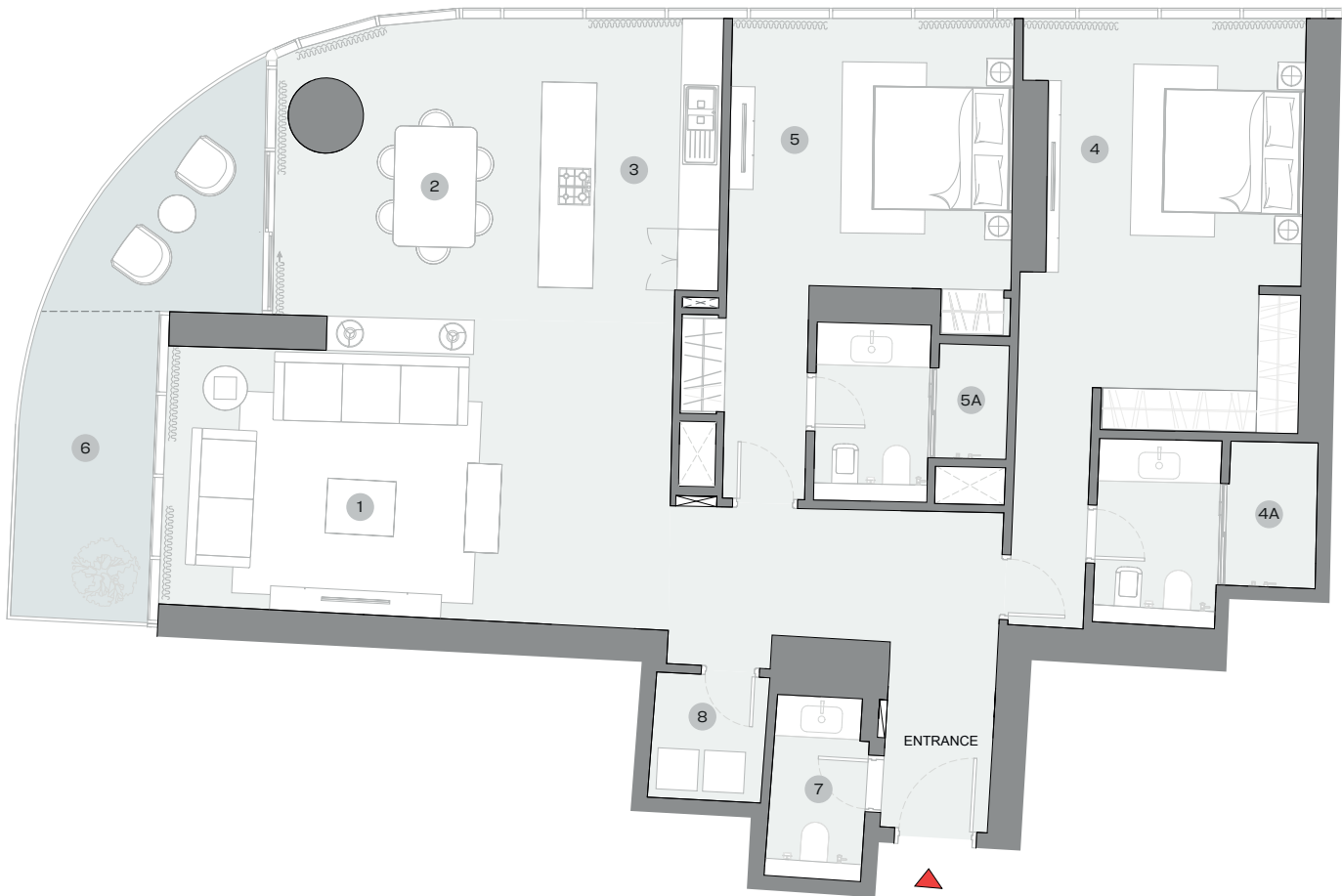
TYPE H (with powder room + balcony)

TOTAL SALEABLE AREA

SUITE = 1,740.63 SQ.FT.  
BALCONY = 189.65 SQ.FT.  
TOTAL = 1,930.28 SQ.FT.



UNIT



List of unit numbers with this unit plan:

VIEWS

Palm Jumeirah, Harbour, Sea  
B1104, B1204, B1304, B1404, B1504, B1604, B1704, B1804, B1904,  
B2004, B2104, B2204, B2304, B2404, B2504, B2604, B2704,  
B2804, B2904, B3004, B3104

DIMENSIONS (MM)

- |                         |                                  |                         |
|-------------------------|----------------------------------|-------------------------|
| 1 LIVING - 7400 X 3850  | 4 MASTER BEDROOM - 3700 X 5350   | 6 BALCONY - 2000 X 4550 |
| 2 DINING - 4000 X 4900  | 4A MASTER BATHROOM - 3200 X 2700 | 7 POWDER - 1400 X 2850  |
| 3 KITCHEN - 2600 X 3950 | 5 BEDROOM 2 - 4150 X 3850        | 8 UTILITY - 1650 X 1850 |
|                         | 5A BATHROOM 2 - 2800 X 2550      |                         |

Disclaimer: 1. All dimensions are in metric, measured to wall finishes. 2. All materials, dimensions & drawings are approximate. 3. Information is subject to change without notice, at developer's absolute discretion. 4. Actual area may vary from the stated area. 5. Drawing are not to scale. 6. All images used are for illustrative purpose only and do not represent the actual size, features, specifications, fittings and furnishings. 7. The developer reserves the right to make revisions/ alterations, at its absolute discretion, without any liability whatsoever.

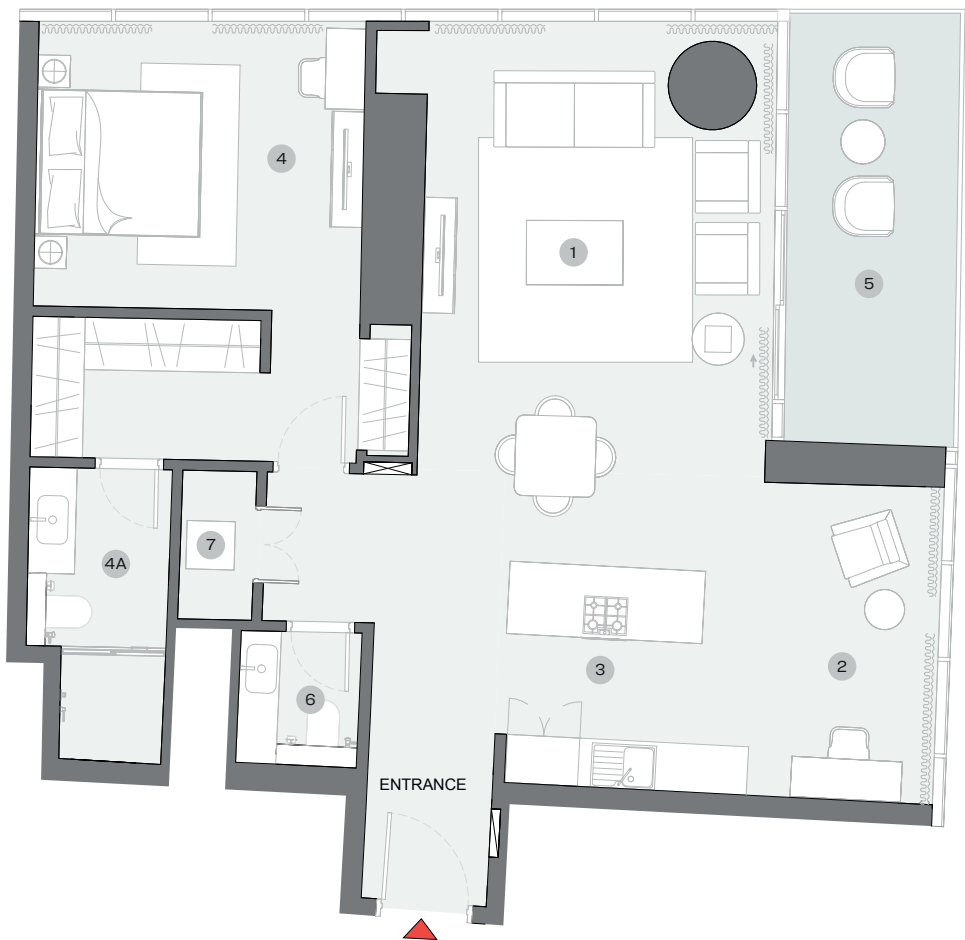


1 BEDROOM + STUDY APARTMENT  
TYPE D (with powder room + balcony)

TOTAL SALEABLE AREA  
SUITE = 1,102.21 SQ.FT.  
BALCONY = 131.43 SQ.FT.  
TOTAL = 1,233.64 SQ.FT.



UNIT



List of unit numbers with this unit plan:

VIEWS

Marina Skyline  
B1105, B1205, B1305, B1405, B1505, B1605, B1705, B1805, B1905, B2005, B2105, B2205, B2305, B2405, B2505, B2605, B2705, B2805, B2905, B3005, B3105

DIMENSIONS (MM)

1 LIVING/DINING - 4350 X 6700	4 BEDROOM - 4050 X 3550	5 BALCONY - 2150 X 5250
2 STUDY - 2650 X 3950	4A BATHROOM - 1800 X 3600	6 POWDER - 1500 X 1750
3 KITCHEN - 2650 X 2750		7 UTILITY - 900 X 1850

Disclaimer: 1. All dimensions are in metric, measured to wall finishes. 2. All materials, dimensions & drawings are approximate. 3. Information is subject to change without notice, at developer's absolute discretion. 4. Actual area may vary from the stated area. 5. Drawing are not to scale. 6. All images used are for illustrative purpose only and do not represent the actual size, features, specifications, fittings and furnishings. 7. The developer reserves the right to make revisions/ alterations, at its absolute discretion, without any liability whatsoever.

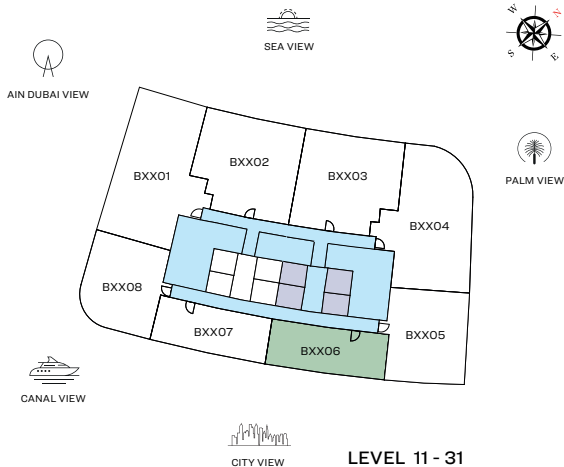


1 BEDROOM APARTMENT

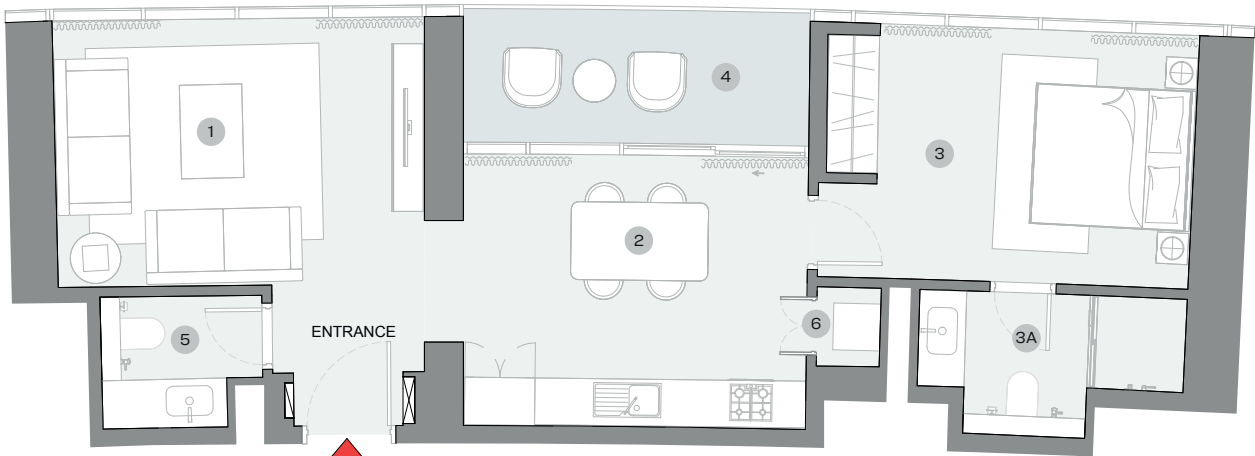
TYPE E (with powder room + balcony)

TOTAL SALEABLE AREA

SUITE = 748.85 SQ.FT.  
BALCONY = 92.57 SQ.FT.  
TOTAL = 841.41 SQ.FT.



UNIT



List of unit numbers with this unit plan:

VIEWS

Marina Skyline  
B1106, B1206, B1306, B1406, B1506, B1606, B1706, B1806, B1906,  
B2006, B2106, B2206, B2306, B2406, B2506, B2606, B2706,  
B2806, B2906, B3006, B3106

DIMENSIONS (MM)

1 LIVING - 4700 X 3450	3 BEDROOM - 4000 X 3250	4 BALCONY - 4650 X 1700
2 KITCHEN/DINING - 4400 X 3500	3A BATHROOM - 3400 X 1850	5 POWDER - 2050 X 1700
		6 UTILITY - 800 X 1000

Disclaimer: 1. All dimensions are in metric, measured to wall finishes. 2. All materials, dimensions & drawings are approximate. 3. Information is subject to change without notice, at developer's absolute discretion. 4. Actual area may vary from the stated area. 5. Drawing are not to scale. 6. All images used are for illustrative purpose only and do not represent the actual size, features, specifications, fittings and furnishings. 7. The developer reserves the right to make revisions/ alterations, at its absolute discretion, without any liability whatsoever.

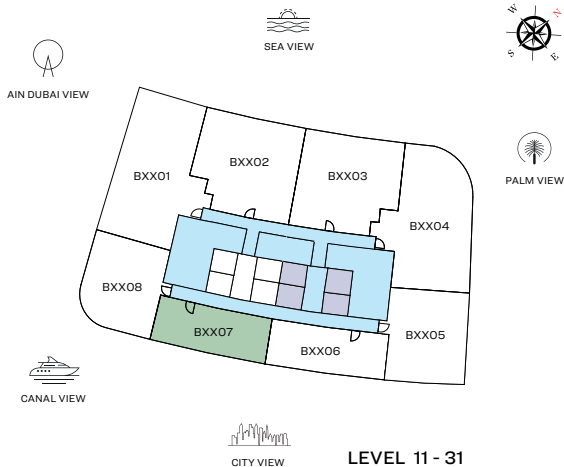


1 BEDROOM APARTMENT

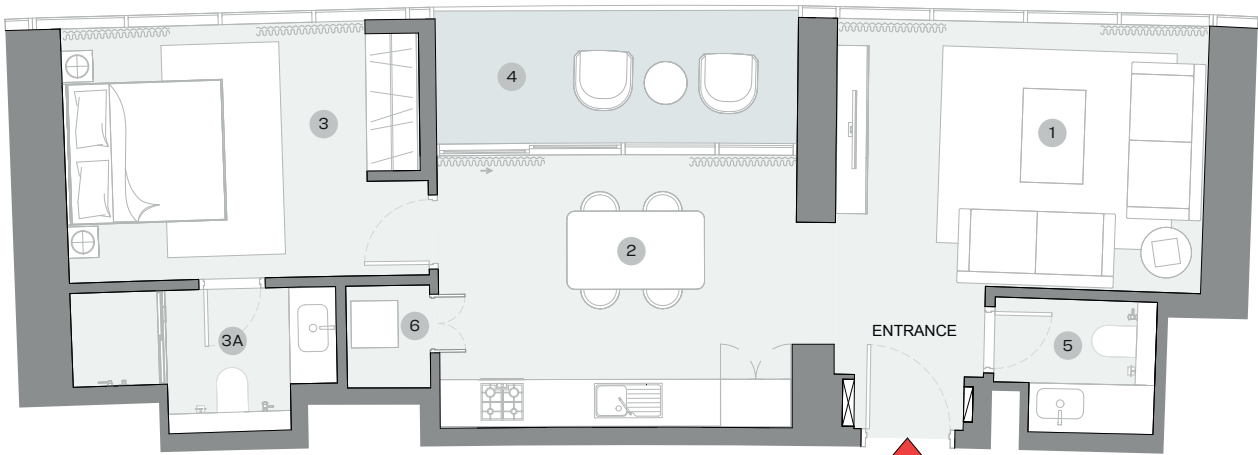
TYPE F (with powder room + balcony)

TOTAL SALEABLE AREA

SUITE = 754.38 SQ.FT.  
BALCONY = 96.23 SQ.FT.  
TOTAL = 850.61 SQ.FT.



UNIT



List of unit numbers with this unit plan:

VIEWS

Marina Skyline  
B1107, B1207, B1307, B1407, B1507, B1607, B1707, B1807, B1907,  
B2007, B2107, B2207, B2307, B2407, B2507, B2607, B2707,  
B2807, B2907, B3007, B3107

DIMENSIONS (MM)

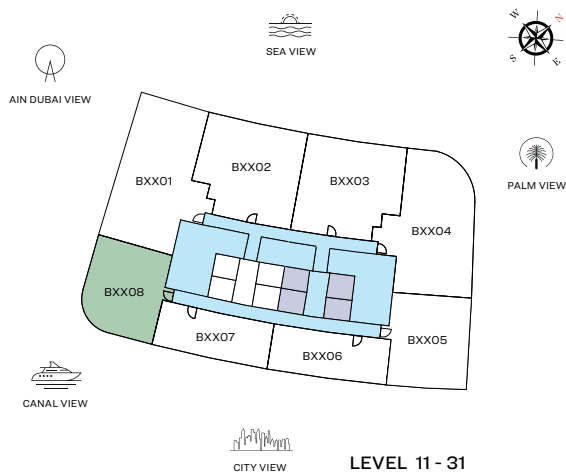
1 LIVING - 4750 X 3400	3 BEDROOM - 3850 X 3250	4 BALCONY - 4650 X 1700
2 KITCHEN/DINING - 4550 X 3500	3A BATHROOM - 3400 X 1850	5 POWDER - 2100 X 1750
		6 UTILITY - 1050 X 1300

Disclaimer: 1. All dimensions are in metric, measured to wall finishes. 2. All materials, dimensions & drawings are approximate. 3. Information is subject to change without notice, at developer's absolute discretion. 4. Actual area may vary from the stated area. 5. Drawing are not to scale. 6. All images used are for illustrative purpose only and do not represent the actual size, features, specifications, fittings and furnishings. 7. The developer reserves the right to make revisions/ alterations, at its absolute discretion, without any liability whatsoever.

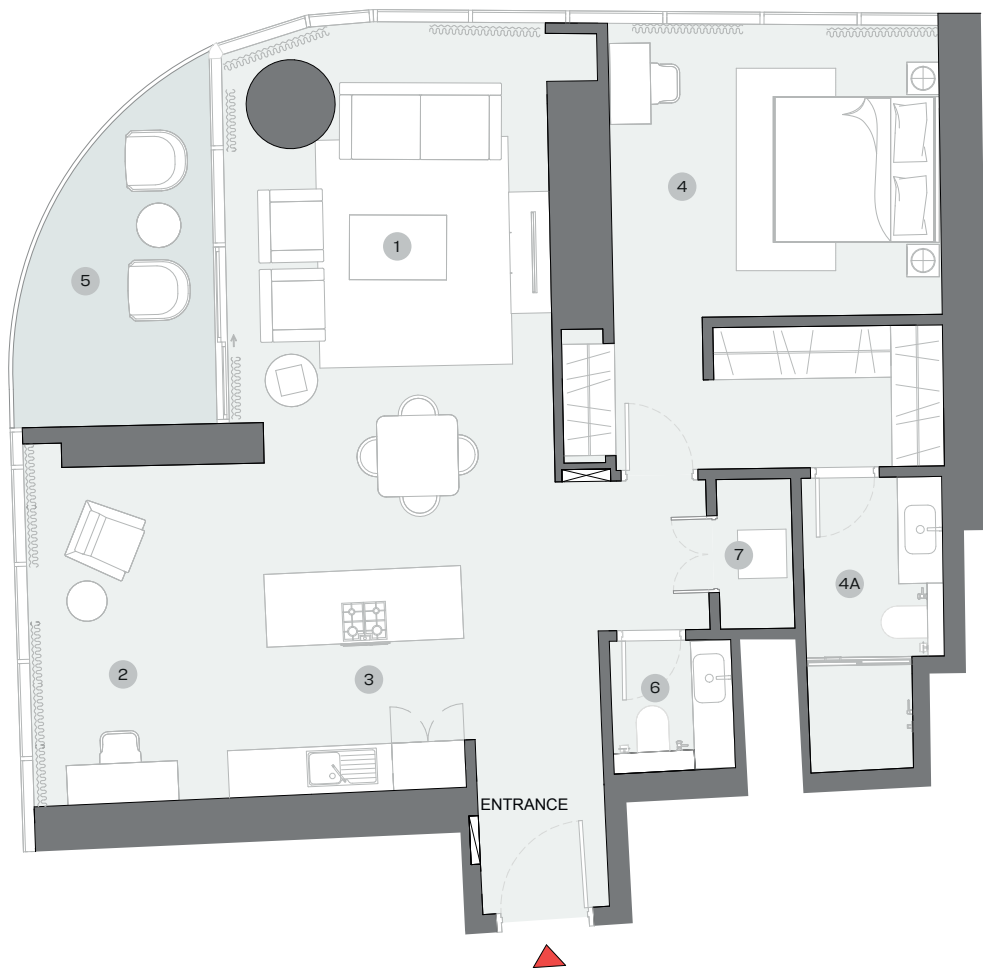


1 BEDROOM + STUDY APARTMENT  
TYPE G (with powder room + balcony)

TOTAL SALEABLE AREA  
SUITE = 1,086.46 SQ.FT.  
BALCONY = 104.15 SQ.FT.  
TOTAL = 1,190.62 SQ.FT.



UNIT



List of unit numbers with this unit plan:

VIEWS

Marina Skyline, Sea  
B1108

Marina, Marina Skyline, Sea  
B1208, B1308, B1408, B1508, B1608, B1708, B1808, B1908, B2008,  
B2108, B2208, B2308, B2408, B2508, B2608, B2708, B2808,  
B2908, B3008, B3108

DIMENSIONS (MM)

1 LIVING/DINING - 4000 X 6650	4 BEDROOM - 4100 X 3550	5 BALCONY
2 STUDY - 2650 X 4100	4A BATHROOM - 1750 X 3600	6 POWDER - 1500 X 1600
3 KITCHEN - 2650 X 2700		7 UTILITY - 900 X 1850

Disclaimer: 1. All dimensions are in metric, measured to wall finishes. 2. All materials, dimensions & drawings are approximate. 3. Information is subject to change without notice, at developer's absolute discretion. 4. Actual area may vary from the stated area. 5. Drawing are not to scale. 6. All images used are for illustrative purpose only and do not represent the actual size, features, specifications, fittings and furnishings. 7. The developer reserves the right to make revisions/ alterations, at its absolute discretion, without any liability whatsoever.





SOBHA  
REALTY