



SOBHA SEAHAVEN

TOWER B

The sea has a
new address



Take your imagination
beyond the horizon



For illustrative purposes only

Wake up to the sounds of life
by the water's edge



For illustrative purposes only



*For illustrative purposes only

A Symphony of Splendor and the Sea

Introducing a new tower at Sobha SeaHaven – where the horizon is as boundless as your dreams.

It's a mesmerizing oasis of luxury living nestled along the pristine Dubai Harbour.



*For illustrative purposes only

WELCOME TO



SOBHA SEAHAVEN

TOWER B

The kaleidoscope of colors painted over the sky
raises a toast to live life to the fullest.



A new landmark in the seascape

After the stunning success of SeaHaven Tower A, comes a new opportunity at Sobha SeaHaven Tower B.

It's a whole new tower rising from the heart of Dubai Harbor with views of Palm Jumeirah and Ain Dubai.



*For illustrative purposes only

The stunning backdrops of sea, mesmerising skyline,
and vibrant city make it a story to be told.

Glancing at the landmarks, Sobha SeaHaven Tower B
is a waterfront living redefined.

The truth is
in the details

SeaHaven tower's sail-inspired design against the canvas of the sea and sleek silhouette creates a sense of movement. It takes cues from the elegant superyachts with their fluid lines and clean angles. Capturing the essence of the sea.

To make a statement, the facade blends high-quality materials, rich woods, refined metals, glass, and steel.



*For illustrative purposes only



*For illustrative purposes only

From the foyer, enter your exquisitely designed suite. Its open-concept layout and floor-to-ceiling windows mimic the panoramic views from a yacht's deck.

Every element is designed for timeless elegance - sumptuous furnishings, custom millwork, and handcrafted cabinetry makes the difference between ordinary and extraordinary living.

Twice is nice

The Sealaven towers are connected by a stunning sky bridge,
giving you twice the experience.



For illustrative purposes only



*For illustrative purposes only

Where
Amenities
become essentials

At SeaHaven Tower B, your every desire is met with effortless grace.
Extravagance knows no bounds, and every whim is catered to.

Surrender to blissful rejuvenation. Let your senses be tantalized.
Here over-the-top indulgences are not luxuries but the essence.

Indoor and Outdoor
Amenities



SOBHA SEAHAVEN



Health club with Sauna & Steam
Changing Room

Indoor Cinema



Indoor Game Room
Serviced Club Lounge



Indoor Gym



Pool Deck



Yoga Zone / Meditation Zone

Infinity edge leisure pool facing harbor
with kid's pool



Day Bed



Outdoor Gym



Family Zone with Barbeque Area

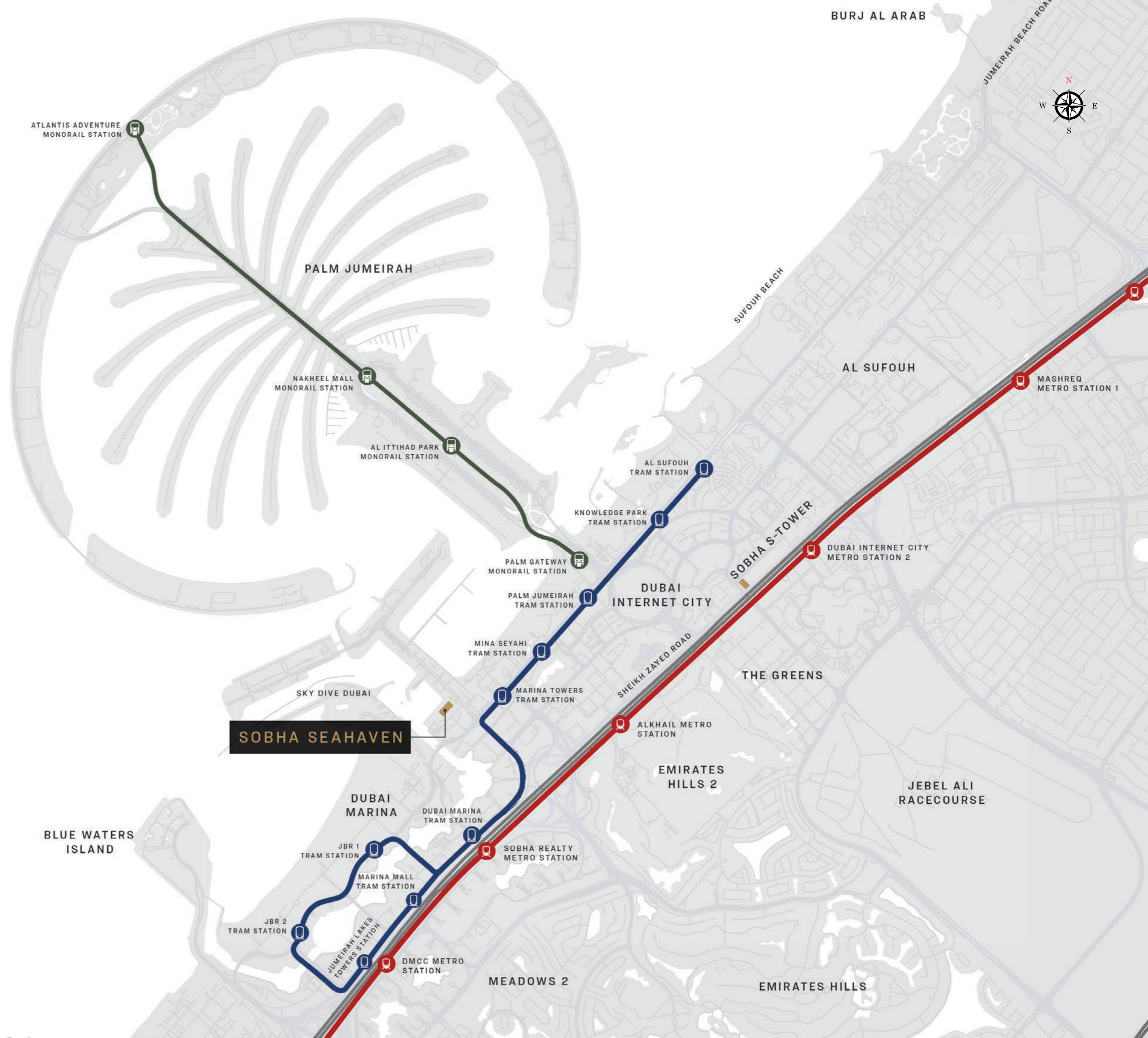


Outdoor Cinema



Outdoor Kids' Play Area

Location Map





Site Plan

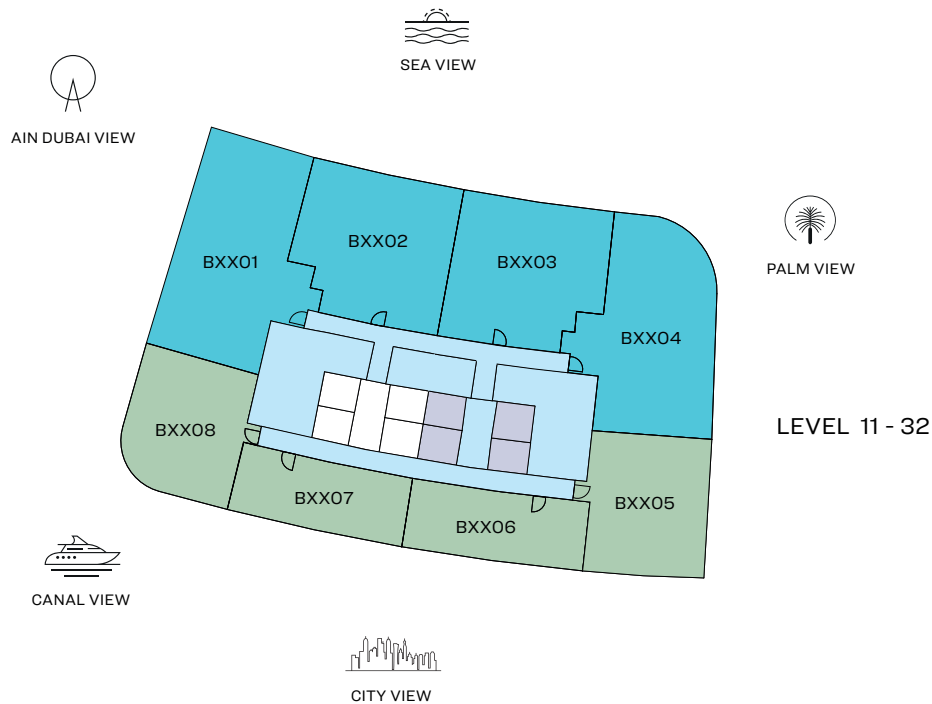
FLOOR AND UNIT PLAN
LAYOUTS



SOBHA SEAHAVEN

FLOOR PLAN LAYOUT

TOWER B

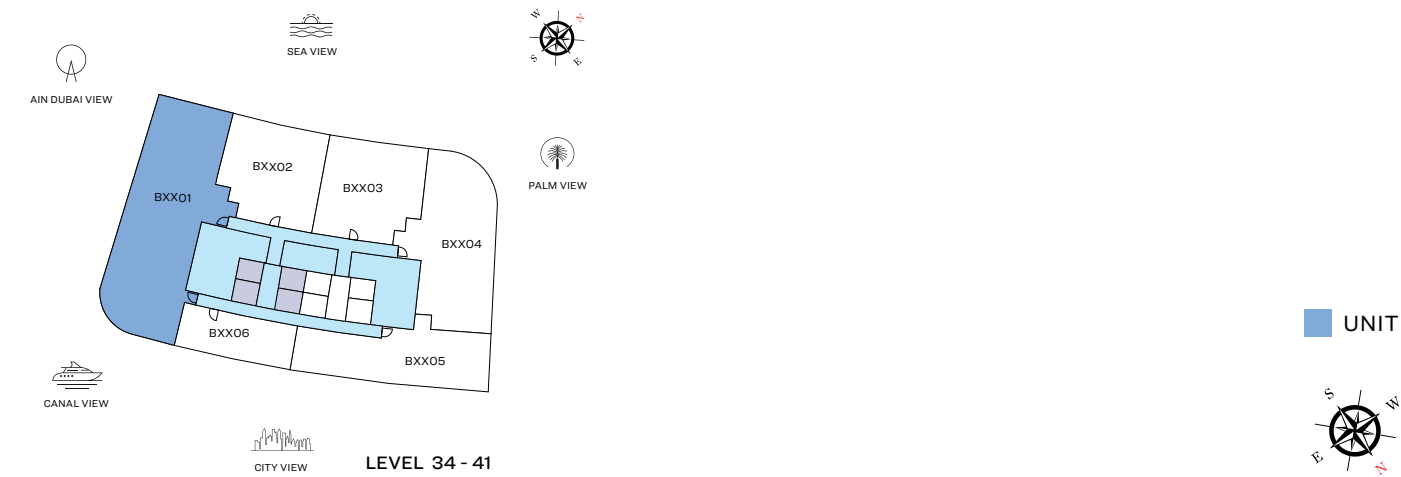


- | | |
|--|---|
|  1 BED UNIT |  LOBBIES, CORRIDORS & STAIRS |
|  2 BED UNIT |  LIFTS |
|  3 BED UNIT | |

Disclaimer: 1. All dimensions are in metric, measured to wall finishes. 2. All materials, dimensions & drawings are approximate. 3. Information is subject to change without notice, at developer's absolute discretion. 4. Actual area may vary from the stated area. 5. Drawing are not to scale. 6. All images used are for illustrative purpose only and do not represent the actual size, features, specifications, fittings and furnishings. 7. The developer reserves the right to make revisions/ alterations, at its absolute discretion, without any liability whatsoever.

3 BEDROOM APARTMENT

TYPE A (with powder room + maid room + balcony)



List of unit numbers with this unit plan:

VIEWS

Blue waters, Ain Dubai, Palm Jumeirah, Harbour, Skydive, Marina, Marina Skyline, Sea, JBR Beach
B3401, B3501, B3601, B3701, B3801, B3901, B4001, B4101,

Disclaimer: 1. All dimensions are in metric, measured to wall finishes. 2. All materials, dimensions & drawings are approximate. 3. Information is subject to change without notice, at developer's absolute discretion. 4. Actual area may vary from the stated area. 5. Drawing are not to scale. 6. All images used are for illustrative purpose only and do not represent the actual size, features, specifications, fittings and furnishings. 7. The developer reserves the right to make revisions/ alterations, at its absolute discretion, without any liability whatsoever.

3 BEDROOM APARTMENT

AREAS & DIMENSIONS

TYPE A (with powder room + maid room)

		UNIT NO. B3401 SUITE = 2,918.10 SQ.FT. BALCONY = 388.68 SQ.FT. TOTAL = 3,306.78 SQ.FT.	UNIT NO. B3501 SUITE = 2,969.98 SQ.FT. BALCONY = 395.68 SQ.FT. TOTAL = 3,365.66 SQ.FT.	UNIT NO. B3601 SUITE = 3,006.25 SQ.FT. BALCONY = 401.06 SQ.FT. TOTAL = 3,407.31 SQ.FT.	UNIT NO. B3701 SUITE = 3,049.20 SQ.FT. BALCONY = 416.56 SQ.FT. TOTAL = 3,465.76 SQ.FT.
	DESCRIPTION	DIMENSIONS (MM)	DIMENSIONS (MM)	DIMENSIONS (MM)	DIMENSIONS (MM)
1	LIVING ROOM	7450 x 4250	7450 x 4250	7450 x 4250	7450 x 4250
2	DINING ROOM	5900 x 4750	5900 x 4850	5900 x 5000	5900 x 5200
3	KITCHEN	4700 x 5400	4700 x 5600	4700 x 5750	4700 x 5900
4	MASTER BEDROOM	4200 x 5100	4200 x 5350	4200 x 5550	4200 x 5700
4A	M. BEDROOM BATHROOM	3700 x 4100	3700 x 4100	3700 x 4100	3700 x 4100
5	BEDROOM - 01	4050 x 3400	4050 x 3500	4050 x 3500	4050 x 3700
5A	BEDROOM - 01 BATHROOM	2250 x 2100	2250 x 2200	2250 x 2350	2250 x 2350
6	BEDROOM - 02	3750 x 3300	3750 x 3500	3750 x 3500	3750 x 3550
6A	BEDROOM - 02 BATHROOM	2300 x 2050	2300 x 2050	2300 x 2250	2300 x 2350
		UNIT NO. B3801 SUITE = 3,090.96 SQ.FT. BALCONY = 419.15 SQ.FT. TOTAL = 3,510.11 SQ.FT.	UNIT NO. B3901 SUITE = 3,135.20 SQ.FT. BALCONY = 436.37 SQ.FT. TOTAL = 3,571.57 SQ.FT.	UNIT NO. B4001 SUITE = 3,178.15 SQ.FT. BALCONY = 438.63 SQ.FT. TOTAL = 3,616.78 SQ.FT.	UNIT NO. B4101 SUITE = 3,233.05 SQ.FT. BALCONY = 451.55 SQ.FT. TOTAL = 3,684.60 SQ.FT.
	DESCRIPTION	DIMENSIONS (MM)	DIMENSIONS (MM)	DIMENSIONS (MM)	DIMENSIONS (MM)
1	LIVING ROOM	7450 x 4250	7450 x 4250	7450 x 4250	7450 x 4250
2	DINING ROOM	5900 x 5350	5900 x 5500	5900 x 5650	5900 x 5850
3	KITCHEN	4700 x 6050	4700 x 6200	4700 x 6400	4700 x 6600
4	MASTER BEDROOM	4200 x 5850	4200 x 6000	4200 x 6200	4200 x 6400
4A	M. BEDROOM BATHROOM	3700 x 4100	3700 x 4100	3700 x 4100	3700 x 4100
5	BEDROOM - 01	4050 x 3850	4050 x 4000	4050 x 4200	4050 x 4400
5A	BEDROOM - 01 BATHROOM	2250 x 2350	2250 x 2350	2250 x 2350	2250 x 2350
6	BEDROOM - 02	3750 x 3700	3750 x 3850	3750 x 4050	3750 x 4250
6A	BEDROOM - 02 BATHROOM	2300 x 2350	2300 x 2350	2300 x 2350	2300 x 2350

3 BEDROOM APARTMENT
TYPE B (with powder room + balcony)



List of unit numbers with this unit plan:

VIEWS

Palm Jumeirah, Harbour, Sea
B3404, B3504, B3604, B3704, B3804, B3904, B4004, B4104,

Disclaimer: 1. All dimensions are in metric, measured to wall finishes. 2. All materials, dimensions & drawings are approximate. 3. Information is subject to change without notice, at developer's absolute discretion. 4. Actual area may vary from the stated area. 5. Drawing are not to scale. 6. All images used are for illustrative purpose only and do not represent the actual size, features, specifications, fittings and furnishings. 7. The developer reserves the right to make revisions/ alterations, at its absolute discretion, without any liability whatsoever.

3 BEDROOM APARTMENT

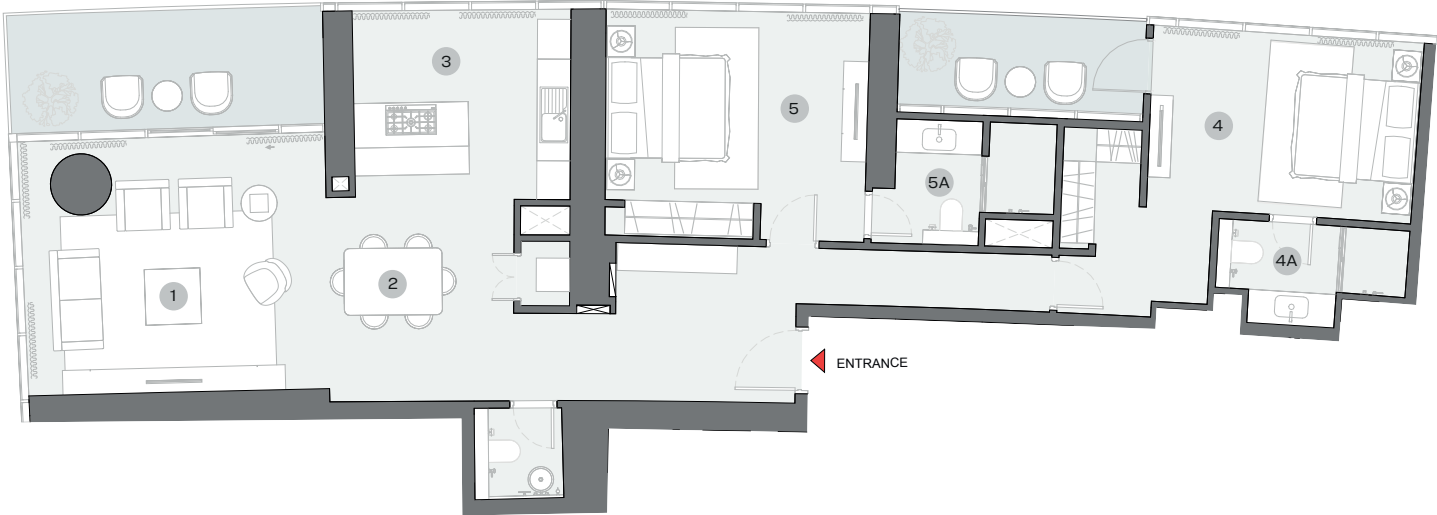
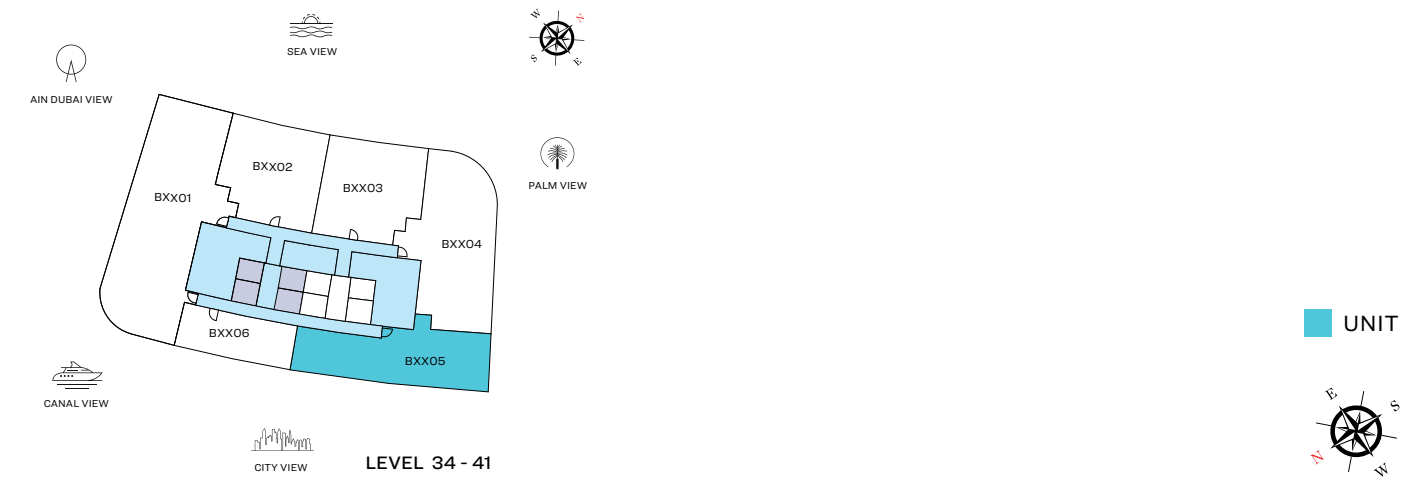
TYPE B (with powder room + balcony)

AREAS & DIMENSIONS

		UNIT NO. B3404 SUITE = 2,167.53 SQ.FT. BALCONY = 186.86 SQ.FT. TOTAL = 2,354.39 SQ.FT.	UNIT NO. B3504 SUITE = 2,172.37 SQ.FT. BALCONY = 188.05 SQ.FT. TOTAL = 2,360.42 SQ.FT.	UNIT NO. B3604 SUITE = 2,178.72 SQ.FT. BALCONY = 189.34 SQ.FT. TOTAL = 2,368.06 SQ.FT.	UNIT NO. B3704 SUITE = 2,185.50 SQ.FT. BALCONY = 190.20 SQ.FT. TOTAL = 2,375.70 SQ.FT.
	DESCRIPTION	DIMENSIONS (MM)	DIMENSIONS (MM)	DIMENSIONS (MM)	DIMENSIONS (MM)
1	LIVING ROOM	7300X4300	7300X4300	7350X4300	7350X4300
2	DINING ROOM	3600X4600	3600X4600	3600X4650	3600X4650
3	KITCHEN	2700X4100	2700X4100	2700X4150	2700X4200
4	MASTER BEDROOM	4050X4050	4050X4050	4050X4100	4050X4100
4A	M. BEDROOM BATHROOM	2750X2700	2750X2700	2750X2700	2750X2700
5	BEDROOM - 01	3700X3950	3700X3950	3700X4000	3700X4000
5A	BEDROOM - 01 BATHROOM	3000X2650	3000X2650	3000X2650	3000X2650
6	BEDROOM - 02	4100X4050	4100X4050	4100X4100	4100X4150
6A	BEDROOM - 02 BATHROOM	2800X2600	2800X2600	2800X2600	2800X2600
		UNIT NO. B3804 SUITE = 2,192.39 SQ.FT. BALCONY = 192.03 SQ.FT. TOTAL = 2,384.42 SQ.FT.	UNIT NO. B3904 SUITE = 2,200.04 SQ.FT. BALCONY = 193.21 SQ.FT. TOTAL = 2,393.25 SQ.FT.	UNIT NO. B4004 SUITE = 2,206.92 SQ.FT. BALCONY = 194.07 SQ.FT. TOTAL = 2,400.99 SQ.FT.	UNIT NO. B4104 SUITE = 2,214.67 SQ.FT. BALCONY = 194.94 SQ.FT. TOTAL = 2,409.61 SQ.FT.
	DESCRIPTION	DIMENSIONS (MM)	DIMENSIONS (MM)	DIMENSIONS (MM)	DIMENSIONS (MM)
1	LIVING ROOM	7350X4300	7350X4300	7350X4300	7350X4300
2	DINING ROOM	3600X4700	3600X4750	3600X4750	3600X4800
3	KITCHEN	2700X4250	2700X4250	2700X4300	2700X4350
4	MASTER BEDROOM	4050X4150	4050X4200	4050X4200	4050X4250
4A	M. BEDROOM BATHROOM	2750X2700	2750X2700	2750X2700	2750X2700
5	BEDROOM - 01	3700X4050	3700X4100	3700X4100	3700X4150
5A	BEDROOM - 01 BATHROOM	3000X2650	3000X2650	3000X2650	3000X2650
6	BEDROOM - 02	4100X4200	4100X4250	4100X4250	4100X4300
6A	BEDROOM - 02 BATHROOM	2800X2600	2800X2600	2800X2600	2800X2600

2 BEDROOM APARTMENT

TYPE A (with powder room + balcony)



List of unit numbers with this unit plan:

VIEWS

Marina Skyline, Marina
B3405, B3505, B3605, B3705, B3805, B3905, B4005, B4105,

Disclaimer: 1. All dimensions are in metric, measured to wall finishes. 2. All materials, dimensions & drawings are approximate. 3. Information is subject to change without notice, at developer's absolute discretion. 4. Actual area may vary from the stated area. 5. Drawing are not to scale. 6. All images used are for illustrative purpose only and do not represent the actual size, features, specifications, fittings and furnishings. 7. The developer reserves the right to make revisions/ alterations, at its absolute discretion, without any liability whatsoever.

2 BEDROOM APARTMENT
TYPE A (with powder room + balcony)

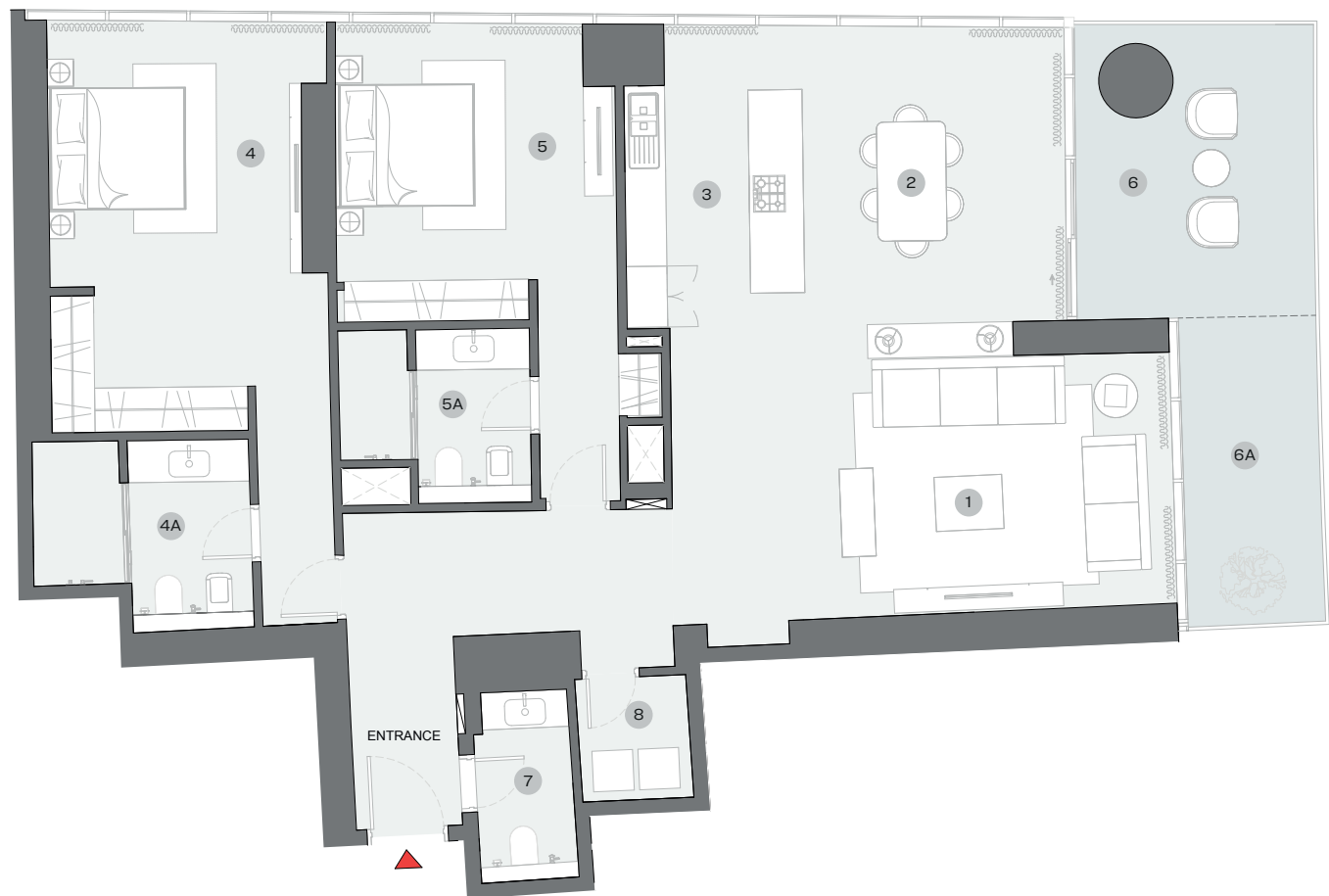
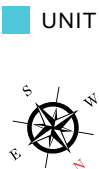
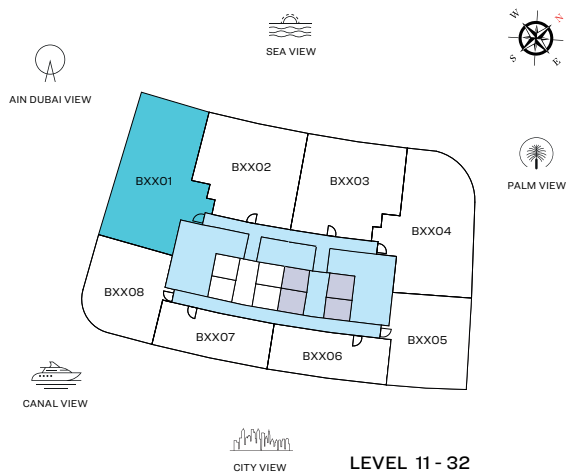
AREAS & DIMENSIONS

		UNIT NO. B3405 SUITE = 1,538.16 SQ.FT. BALCONY = 227.23 SQ.FT. TOTAL = 1,765.39 SQ.FT.	UNIT NO. B3505 SUITE = 1,539.56 SQ.FT. BALCONY = 227.44 SQ.FT. TOTAL = 1,767.00 SQ.FT.	UNIT NO. B3605 SUITE = 1,541.18 SQ.FT. BALCONY = 227.66 SQ.FT. TOTAL = 1,768.84 SQ.FT.	UNIT NO. B3705 SUITE = 1,542.90 SQ.FT. BALCONY = 229.59 SQ.FT. TOTAL = 1,772.49 SQ.FT.
	DESCRIPTION	DIMENSIONS (MM)	DIMENSIONS (MM)	DIMENSIONS (MM)	DIMENSIONS (MM)
1	LIVING ROOM	5350X4550	5400X4550	5400X4550	5400X4550
2	DINING ROOM	3300X3650	3350X3650	3350X3650	3350X3650
3	KITCHEN	3850X3300	3850X3300	3850X3300	3850X3300
4	MASTER BEDROOM	4750X3200	4750X3200	4750X3200	4750X3200
4A	M. BEDROOM BATHROOM	3400X1800	3400X1800	3400X1800	3400X1800
5	BEDROOM - 01	4650X3450	4650X3450	4650X3450	4650X3450
5A	BEDROOM - 01 BATHROOM	2850x2200	2850x2200	2850x2200	2850x2200

		UNIT NO. B3805 SUITE = 1,544.51 SQ.FT. BALCONY = 230.24 SQ.FT. TOTAL = 1,774.75 SQ.FT.	UNIT NO. B3905 SUITE = 1,546.24 SQ.FT. BALCONY = 231.53 SQ.FT. TOTAL = 1,777.77 SQ.FT.	UNIT NO. B4005 SUITE = 1,548.17 SQ.FT. BALCONY = 231.85 SQ.FT. TOTAL = 1,780.02 SQ.FT.	UNIT NO. B4105 SUITE = 1,550.11 SQ.FT. BALCONY = 233.47 SQ.FT. TOTAL = 1,783.58 SQ.FT.
	DESCRIPTION	DIMENSIONS (MM)	DIMENSIONS (MM)	DIMENSIONS (MM)	DIMENSIONS (MM)
1	LIVING ROOM	5450X4550	5500X4550	5500X4550	5600X4550
2	DINING ROOM	3350X3650	3350X3650	3350X3650	3350X3650
3	KITCHEN	3850X3300	3850X3300	3850X3300	3850X3300
4	MASTER BEDROOM	4750X3200	4750X3200	4750X3250	4750X3250
4A	M. BEDROOM BATHROOM	3400X1800	3400X1800	3400X1800	3400X1800
5	BEDROOM - 01	4650X3450	4650X3450	4650X3450	4650X3450
5A	BEDROOM - 01 BATHROOM	2850x2200	2850x2200	2850x2200	2850x2200

2 BEDROOM APARTMENT
TYPE E (with powder room + balcony)

TOTAL SALEABLE AREA
SUITE = 1,749.78 SQ.FT.
BALCONY = 273.30 SQ.FT.
TOTAL = 2,023.08 SQ.FT.



List of unit numbers with this unit plan:

VIEWS

Blue waters, Ain Dubai, Palm Jumeirah, Harbour, Sea, Skydive
B1101, B1201, B1301, B1401, B1501, B1601, B1701, B1801, B1901,
B2001, B2101, B2201, B2301, B2401, B2501, B2601, B2701, B2801,
B2901, B3001, B3101, B3201

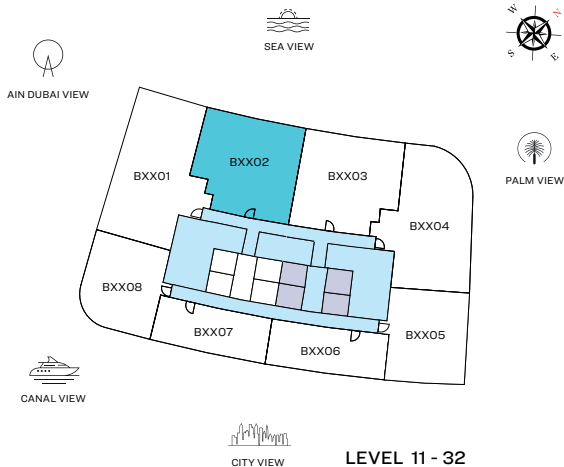
DIMENSIONS (MM)

1 LIVING - 7400 X 3700	4 MASTER BEDROOM - 3700 X 5350	6 BALCONY 1 - 3500 X 4300
2 DINING - 3850 X 4800	4A MASTER BATHROOM - 3200 X 2850	6A BALCONY 2 - 2000 X 4500
3 KITCHEN - 2600 X 4000	5 BEDROOM 2 - 4100 X 4000	7 POWDER - 1450 X 3000
	5A BATHROOM 2 - 2800 X 2550	8 UTILITY - 1650 X 1850

Disclaimer: 1. All dimensions are in metric, measured to wall finishes. 2. All materials, dimensions & drawings are approximate. 3. Information is subject to change without notice, at developer's absolute discretion. 4. Actual area may vary from the stated area. 5. Drawing are not to scale. 6. All images used are for illustrative purpose only and do not represent the actual size, features, specifications, fittings and furnishings. 7. The developer reserves the right to make revisions/ alterations, at its absolute discretion, without any liability whatsoever.

2 BEDROOM APARTMENT
TYPE F (with powder room + balcony)

TOTAL SALEABLE AREA
SUITE = 1,273.48 SQ.FT.
BALCONY = 396.76 SQ.FT.
TOTAL = 1,670.24 SQ.FT.



List of unit numbers with this unit plan:

VIEWS

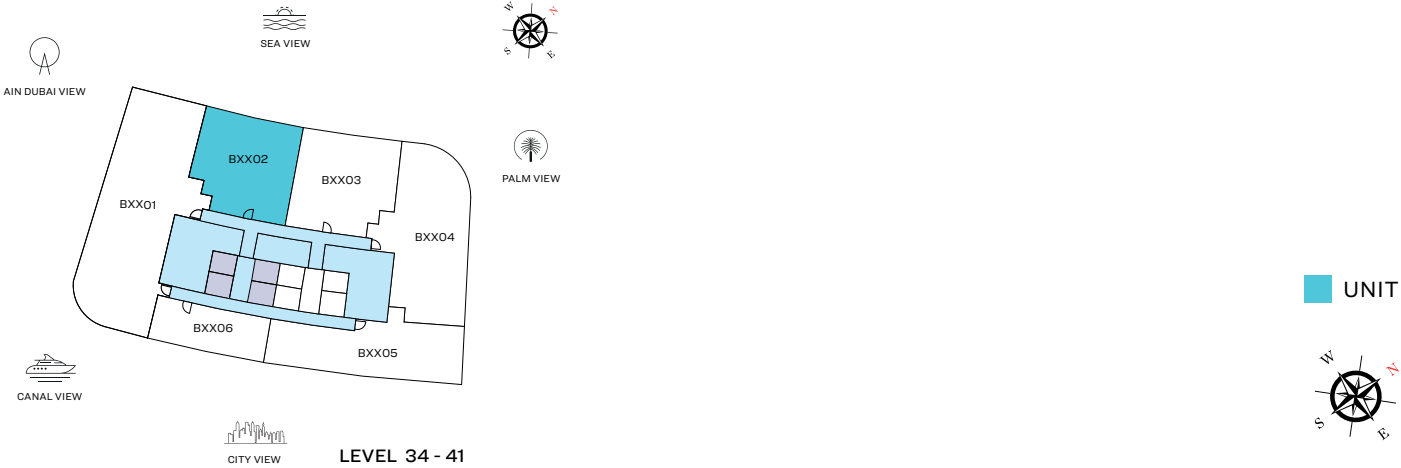
Palm Jumeirah, Harbour, Sea
B1102, B1202, B1302, B1402, B1502, B1602, B1702, B1802, B1902,
B2002, B2102, B2202, B2302, B2402, B2502, B2602, B2702,
B2802, B2902, B3002, B3102, B3202

DIMENSIONS (MM)

1 LIVING - 4200 X 4100	4 MASTER BEDROOM - 3900 X 4450	6 BALCONY 1 - 8100 X 3100
2 DINING - 4300 X 2800	4A MASTER BATHROOM - 3000 X 2600	6A BALCONY 2 - 4650 X 2000
3 KITCHEN - 2800 X 2500	5 BEDROOM 2 - 3650 X 3650	7 POWDER - 1800 X 2200
	5A BATHROOM 2 - 2600 X 2600	8 UTILITY - 850 X 1500

Disclaimer: 1. All dimensions are in metric, measured to wall finishes. 2. All materials, dimensions & drawings are approximate. 3. Information is subject to change without notice, at developer's absolute discretion. 4. Actual area may vary from the stated area. 5. Drawing are not to scale. 6. All images used are for illustrative purpose only and do not represent the actual size, features, specifications, fittings and furnishings. 7. The developer reserves the right to make revisions/ alterations, at its absolute discretion, without any liability whatsoever.

2 BEDROOM APARTMENT
TYPE F (with powder room + balcony)



List of unit numbers with this unit plan:

VIEWS

Palm Jumeirah, Harbour, Sea
B3402, B3502, B3602, B3702, B3802, B3902, B4002, B4102

Disclaimer: 1. All dimensions are in metric, measured to wall finishes. 2. All materials, dimensions & drawings are approximate. 3. Information is subject to change without notice, at developer's absolute discretion. 4. Actual area may vary from the stated area. 5. Drawing are not to scale. 6. All images used are for illustrative purpose only and do not represent the actual size, features, specifications, fittings and furnishings. 7. The developer reserves the right to make revisions/ alterations, at its absolute discretion, without any liability whatsoever.

2 BEDROOM APARTMENT

TYPE F (with powder room + balcony)

AREAS & DIMENSIONS

		UNIT NO. B3402 SUITE = 1,288.98 SQ.FT. BALCONY = 389.33 SQ.FT. TOTAL = 1,678.31 SQ.FT.	UNIT NO. B3502 SUITE = 1,288.98 SQ.FT. BALCONY = 389.33 SQ.FT. TOTAL = 1,678.31 SQ.FT.	UNIT NO. B3602 SUITE = 1,288.98 SQ.FT. BALCONY = 389.33 SQ.FT. TOTAL = 1,678.31 SQ.FT.	UNIT NO. B3702 SUITE = 1,288.98 SQ.FT. BALCONY = 389.33 SQ.FT. TOTAL = 1,678.31 SQ.FT.
	DESCRIPTION	DIMENSIONS (MM)	DIMENSIONS (MM)	DIMENSIONS (MM)	DIMENSIONS (MM)
1	LIVING ROOM	4200 x 4050	4200 x 4050	4200 x 4100	4200 x 4100
2	DINING ROOM	4250 x 2800	4250 x 2800	4250 x 2800	4250 x 2800
3	KITCHEN	2850 x 2500	2850 x 2500	2850 x 2500	2850 x 2500
4	MASTER BEDROOM	3850 x 4450	3850 x 4450	3850 x 4450	3850 x 4450
4A	M. BEDROOM BATHROOM	2950 x 2600	2950 x 2600	2950 x 2600	2950 x 2600
5	BEDROOM - 01	3550 x 3650	3550 x 3650	3550 x 3650	3550 x 3650
5A	BEDROOM - 01 BATHROOM	2900 x 2600	2900 x 2600	2900 x 2600	2900 x 2600

		UNIT NO. B3802 SUITE = 1,288.98 SQ.FT. BALCONY = 389.33 SQ.FT. TOTAL = 1,678.31 SQ.FT.	UNIT NO. B3902 SUITE = 1,288.98 SQ.FT. BALCONY = 389.33 SQ.FT. TOTAL = 1,678.31 SQ.FT.	UNIT NO. B4002 SUITE = 1,288.98 SQ.FT. BALCONY = 389.33 SQ.FT. TOTAL = 1,678.31 SQ.FT.	UNIT NO. B4102 SUITE = 1,288.98 SQ.FT. BALCONY = 389.33 SQ.FT. TOTAL = 1,678.31 SQ.FT.
	DESCRIPTION	DIMENSIONS (MM)	DIMENSIONS (MM)	DIMENSIONS (MM)	DIMENSIONS (MM)
1	LIVING ROOM	4200 x 4100	4200 x 4100	4200 x 4100	4200 x 4100
2	DINING ROOM	4250 x 2800	4250 x 2800	4250 x 2800	4250 x 2800
3	KITCHEN	2850 x 2500	2850 x 2500	2850 x 2500	2850 x 2500
4	MASTER BEDROOM	3850 x 4450	3850 x 4450	3850 x 4450	3850 x 4450
4A	M. BEDROOM BATHROOM	2950 x 2600	2950 x 2600	2950 x 2600	2950 x 2600
5	BEDROOM - 01	3550 x 3650	3550 x 3650	3550 x 3650	3550 x 3650
5A	BEDROOM - 01 BATHROOM	2900 x 2600	2900 x 2600	2900 x 2600	2900 x 2600

2 BEDROOM APARTMENT

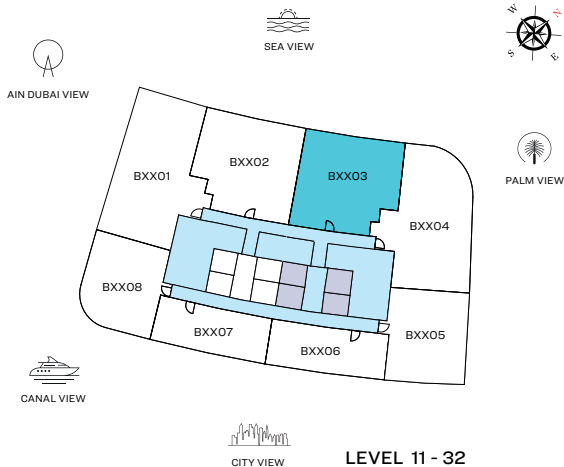
TYPE G (with powder room + balcony)

TOTAL SALEABLE AREA

SUITE = 1,270.57 SQ.FT.

BALCONY = 394.50 SQ.FT.

TOTAL = 1,665.07 SQ.FT.



UNIT



List of unit numbers with this unit plan:

VIEWS

Palm Jumeirah, Harbour, Sea
B1103, B1203, B1303, B1403, B1503, B1603, B1703, B1803, B1903,
B2003, B2103, B2203, B2303, B2403, B2503, B2603, B2703,
B2803, B2903, B3003, B3103, B3203

DIMENSIONS (MM)

1 LIVING - 4150 X 4050	4 MASTER BEDROOM - 3800 X 4450	6 BALCONY 1 - 8000 X 3100
2 DINING - 4300 X 2800	4A MASTER BATHROOM - 3000 X 2600	6A BALCONY 2 - 4600 X 2000
3 KITCHEN - 2850 X 2500	5 BEDROOM 2 - 3800 X 3650	7 POWDER - 1850 X 1950
	5A BATHROOM 2 - 2600 X 2600	8 UTILITY - 850 X 1500

Disclaimer: 1. All dimensions are in metric, measured to wall finishes. 2. All materials, dimensions & drawings are approximate. 3. Information is subject to change without notice, at developer's absolute discretion. 4. Actual area may vary from the stated area. 5. Drawing are not to scale. 6. All images used are for illustrative purpose only and do not represent the actual size, features, specifications, fittings and furnishings. 7. The developer reserves the right to make revisions/ alterations, at its absolute discretion, without any liability whatsoever.

2 BEDROOM APARTMENT
TYPE G (with powder room + balcony)



UNIT



List of unit numbers with this unit plan:

VIEWS

Palm Jumeirah, Harbour, Sea
B3403, B3503, B3603, B3703, B3803, B3903, B4003, B4103

Disclaimer: 1. All dimensions are in metric, measured to wall finishes. 2. All materials, dimensions & drawings are approximate. 3. Information is subject to change without notice, at developer's absolute discretion. 4. Actual area may vary from the stated area. 5. Drawing are not to scale. 6. All images used are for illustrative purpose only and do not represent the actual size, features, specifications, fittings and furnishings. 7. The developer reserves the right to make revisions/ alterations, at its absolute discretion, without any liability whatsoever.

2 BEDROOM APARTMENT

AREAS & DIMENSIONS

TYPE G (with powder room + balcony)

		UNIT NO. B3403 SUITE = 1,283.70 SQ.FT. BALCONY = 386.64 SQ.FT. TOTAL = 1,670.34 SQ.FT.	UNIT NO. B3503 SUITE = 1,283.70 SQ.FT. BALCONY = 386.64 SQ.FT. TOTAL = 1,670.34 SQ.FT.	UNIT NO. B3603 SUITE = 1,283.70 SQ.FT. BALCONY = 386.64 SQ.FT. TOTAL = 1,670.34 SQ.FT.	UNIT NO. B3703 SUITE = 1,283.70 SQ.FT. BALCONY = 386.64 SQ.FT. TOTAL = 1,670.34 SQ.FT.
DESCRIPTION		DIMENSIONS (MM)	DIMENSIONS (MM)	DIMENSIONS (MM)	DIMENSIONS (MM)
1	LIVING ROOM	4150 x 4050	4150X4050	4150X4050	4150X4100
2	DINING ROOM	4250 x 2800	4250X2800	4250X2800	4250X2800
3	KITCHEN	2850 x 2500	2850X2500	2850X2500	2850X2500
4	MASTER BEDROOM	3850 x 4450	3850X4450	3850X4450	3850X4450
4A	M. BEDROOM BATHROOM	2950 x 2550	2950X2550	2950X2550	2950X2550
5	BEDROOM - 01	3600 x 3700	3600X3700	3600X3700	3600X3700
5A	BEDROOM - 01 BATHROOM	2800 x 2550	2800X2550	2800X2550	2800X2550

		UNIT NO. B3803 SUITE = 1,283.70 SQ.FT. BALCONY = 386.64 SQ.FT. TOTAL = 1,670.34 SQ.FT.	UNIT NO. B3903 SUITE = 1,283.70 SQ.FT. BALCONY = 386.64 SQ.FT. TOTAL = 1,670.34 SQ.FT.	UNIT NO. B4003 SUITE = 1,283.70 SQ.FT. BALCONY = 386.64 SQ.FT. TOTAL = 1,670.34 SQ.FT.	UNIT NO. B4103 SUITE = 1,283.70 SQ.FT. BALCONY = 386.64 SQ.FT. TOTAL = 1,670.34 SQ.FT.
DESCRIPTION		DIMENSIONS (MM)	DIMENSIONS (MM)	DIMENSIONS (MM)	DIMENSIONS (MM)
1	LIVING ROOM	4150X4100	4150X4100	4150X4100	4150X4100
2	DINING ROOM	4250X2800	4250X2800	4250X2800	4250X2800
3	KITCHEN	2850X2500	2850X2500	2850X2500	2850X2500
4	MASTER BEDROOM	3850X4450	3850X4450	3850X4450	3850X4450
4A	M. BEDROOM BATHROOM	2950X2550	2950X2550	2950X2550	2950X2550
5	BEDROOM - 01	3600X3700	3600X3700	3600X3700	3600X3700
5A	BEDROOM - 01 BATHROOM	2800X2550	2800X2550	2800X2550	2800X2550

2 BEDROOM APARTMENT

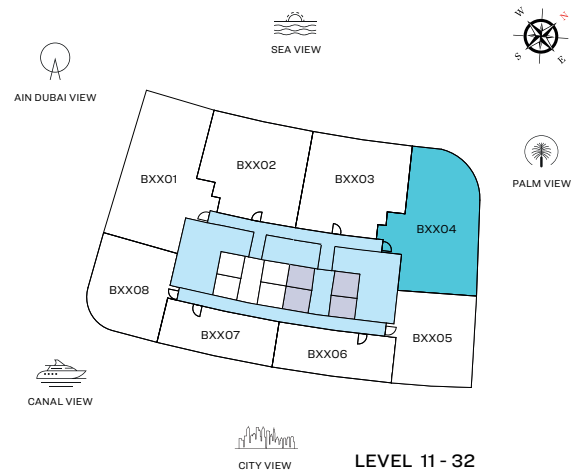
TYPE H (with powder room + balcony)

TOTAL SALEABLE AREA

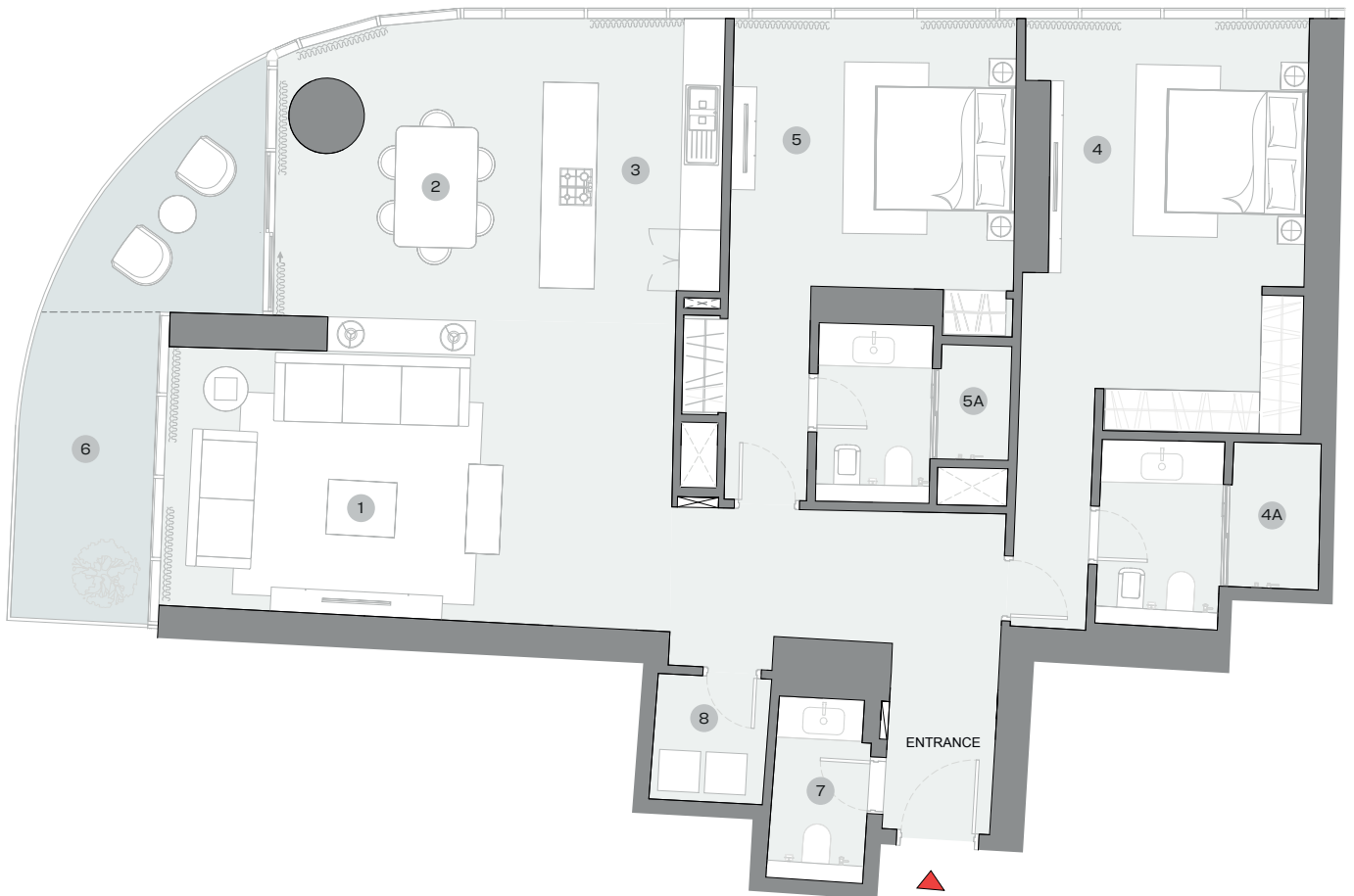
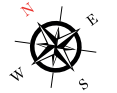
SUITE = 1,740.63 SQ.FT.

BALCONY = 189.65 SQ.FT.

TOTAL = 1,930.28 SQ.FT.



UNIT



List of unit numbers with this unit plan:

VIEWS

Palm Jumeirah, Harbour, Sea

B1104, B1204, B1304, B1404, B1504, B1604, B1704, B1804, B1904, B2004, B2104, B2204, B2304, B2404, B2504, B2604, B2704, B2804, B2904, B3004, B3104, B3204

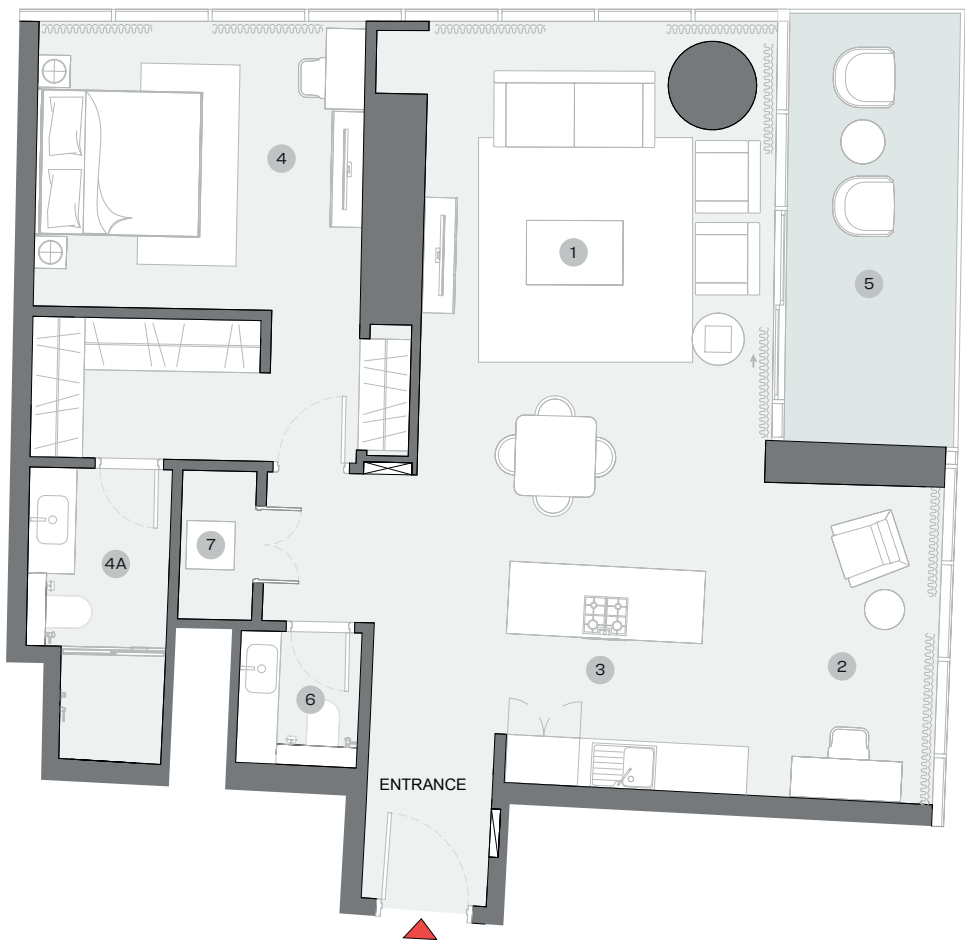
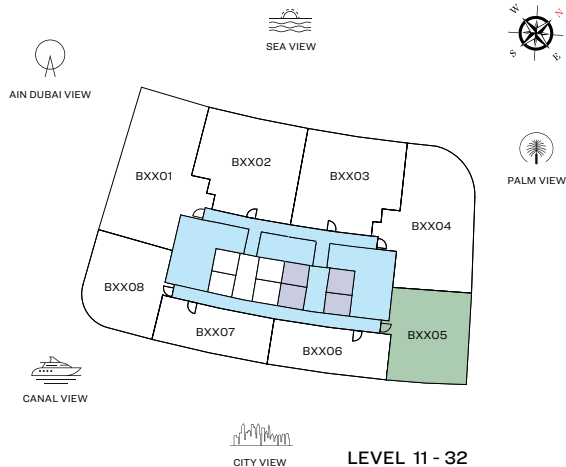
DIMENSIONS (MM)

- | | | |
|-------------------------|----------------------------------|-------------------------|
| 1 LIVING - 7400 X 3850 | 4 MASTER BEDROOM - 3700 X 5350 | 6 BALCONY - 2000 X 4550 |
| 2 DINING - 4000 X 4900 | 4A MASTER BATHROOM - 3200 X 2700 | 7 POWDER - 1400 X 2850 |
| 3 KITCHEN - 2600 X 3950 | 5 BEDROOM 2 - 4150 X 3850 | 8 UTILITY - 1650 X 1850 |
| | 5A BATHROOM 2 - 2800 X 2550 | |

Disclaimer: 1. All dimensions are in metric, measured to wall finishes. 2. All materials, dimensions & drawings are approximate. 3. Information is subject to change without notice, at developer's absolute discretion. 4. Actual area may vary from the stated area. 5. Drawing are not to scale. 6. All images used are for illustrative purpose only and do not represent the actual size, features, specifications, fittings and furnishings. 7. The developer reserves the right to make revisions/ alterations, at its absolute discretion, without any liability whatsoever.

1 BEDROOM + STUDY APARTMENT
TYPE D (with powder room + balcony)

TOTAL SALEABLE AREA
SUITE = 1,102.21 SQ.FT.
BALCONY = 131.43 SQ.FT.
TOTAL = 1,233.64 SQ.FT.



List of unit numbers with this unit plan:

VIEWS

Marina Skyline
B1105, B1205, B1305, B1405, B1505, B1605, B1705, B1805, B1905,
B2005, B2105, B2205, B2305, B2405, B2505, B2605, B2705,
B2805, B2905, B3005, B3105, B3205

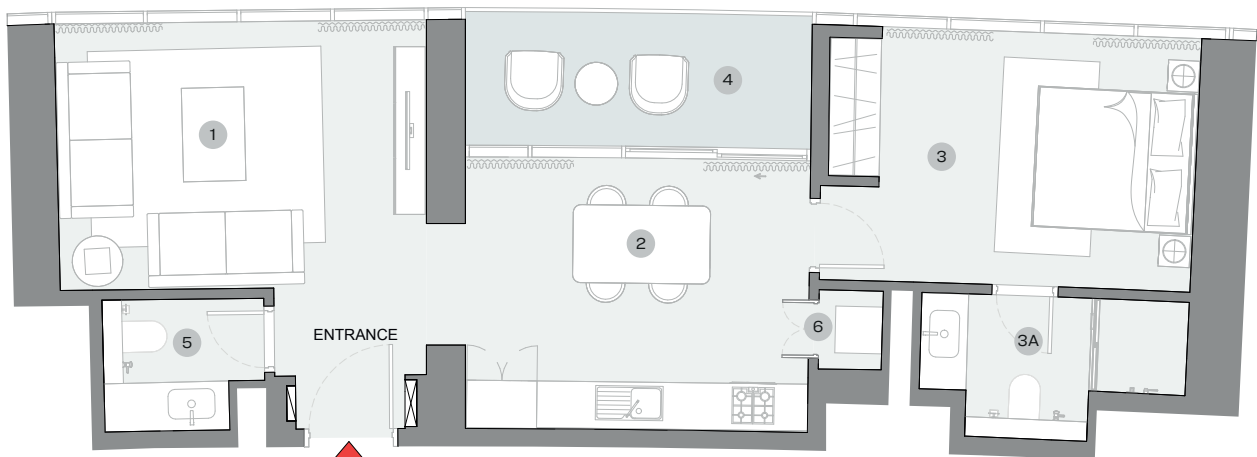
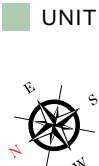
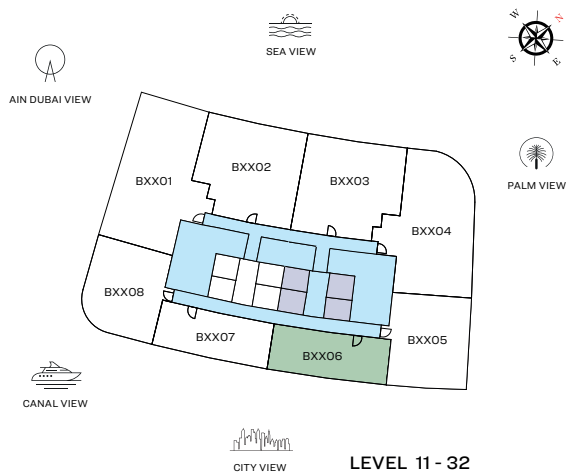
DIMENSIONS (MM)

1 LIVING/DINING - 4350 X 6700	4 BEDROOM - 4050 X 3550	5 BALCONY - 2150 X 5250
2 STUDY - 2650 X 3950	4A BATHROOM - 1800 X 3600	6 POWDER - 1500 X 1750
3 KITCHEN - 2650 X 2750		7 UTILITY - 900 X 1850

Disclaimer: 1. All dimensions are in metric, measured to wall finishes. 2. All materials, dimensions & drawings are approximate. 3. Information is subject to change without notice, at developer's absolute discretion. 4. Actual area may vary from the stated area. 5. Drawing are not to scale. 6. All images used are for illustrative purpose only and do not represent the actual size, features, specifications, fittings and furnishings. 7. The developer reserves the right to make revisions/ alterations, at its absolute discretion, without any liability whatsoever.

1 BEDROOM APARTMENT
TYPE E (with powder room + balcony)

TOTAL SALEABLE AREA
SUITE = 748.85 SQ.FT.
BALCONY = 92.57 SQ.FT.
TOTAL = 841.41 SQ.FT.



List of unit numbers with this unit plan:

VIEWS

Marina Skyline, Marina
B1106, B1206, B1306, B1406, B1506, B1606, B1706, B1806, B1906,
B2006, B2106, B2206, B2306, B2406, B2506, B2606, B2706,
B2806, B2906, B3006, B3106, B3206

DIMENSIONS (MM)

1 LIVING - 4700 X 3450	3 BEDROOM - 4000 X 3250	4 BALCONY - 4650 X 1700
2 KITCHEN/DINING - 4400 X 3500	3A BATHROOM - 3400 X 1850	5 POWDER - 2050 X 1700
		6 UTILITY - 800 X 1000

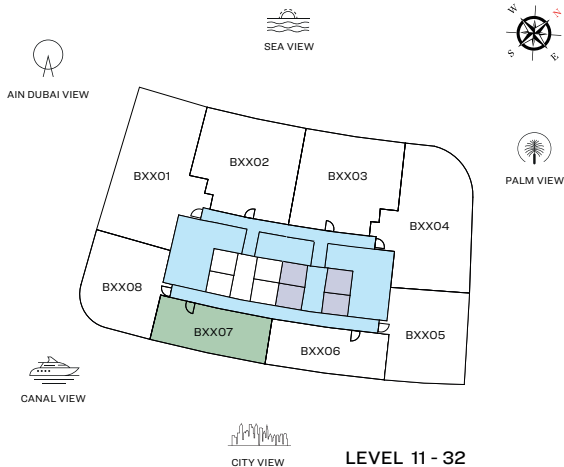
Disclaimer: 1. All dimensions are in metric, measured to wall finishes. 2. All materials, dimensions & drawings are approximate. 3. Information is subject to change without notice, at developer's absolute discretion. 4. Actual area may vary from the stated area. 5. Drawing are not to scale. 6. All images used are for illustrative purpose only and do not represent the actual size, features, specifications, fittings and furnishings. 7. The developer reserves the right to make revisions/ alterations, at its absolute discretion, without any liability whatsoever.

1 BEDROOM APARTMENT

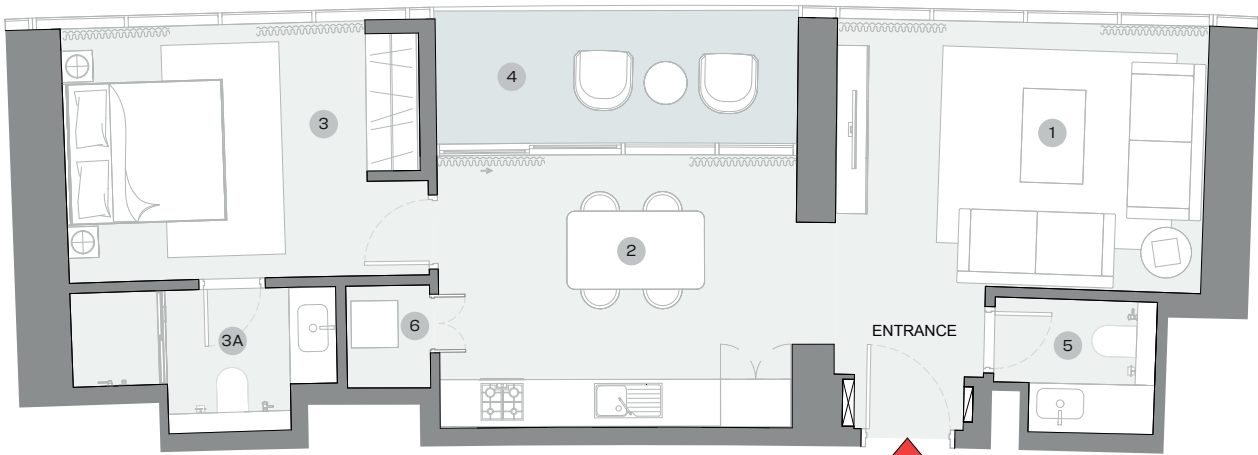
TYPE F (with powder room + balcony)

TOTAL SALEABLE AREA

SUITE = 754.38 SQ.FT.
BALCONY = 96.23 SQ.FT.
TOTAL = 850.61 SQ.FT.



UNIT



List of unit numbers with this unit plan:

VIEWS

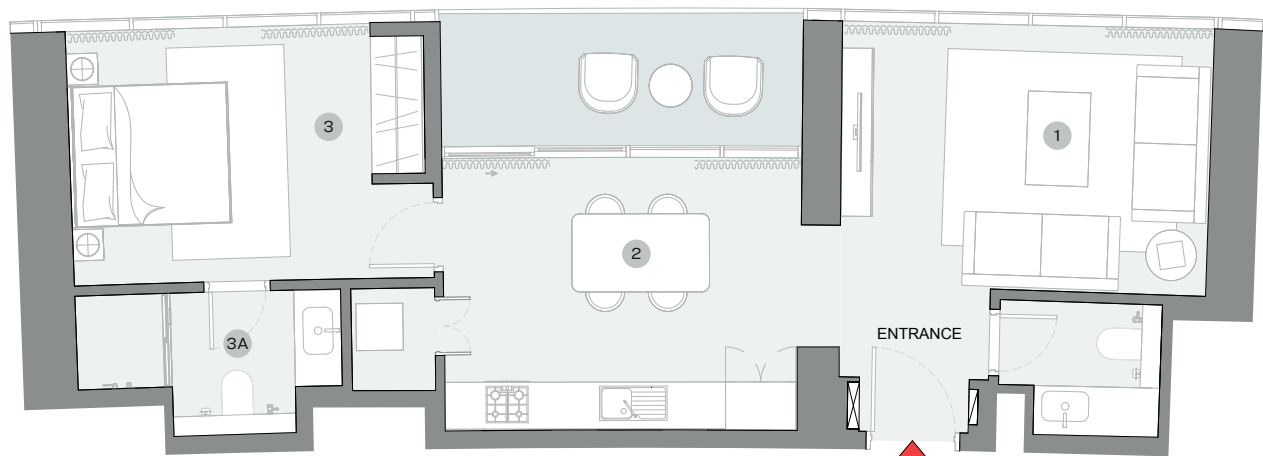
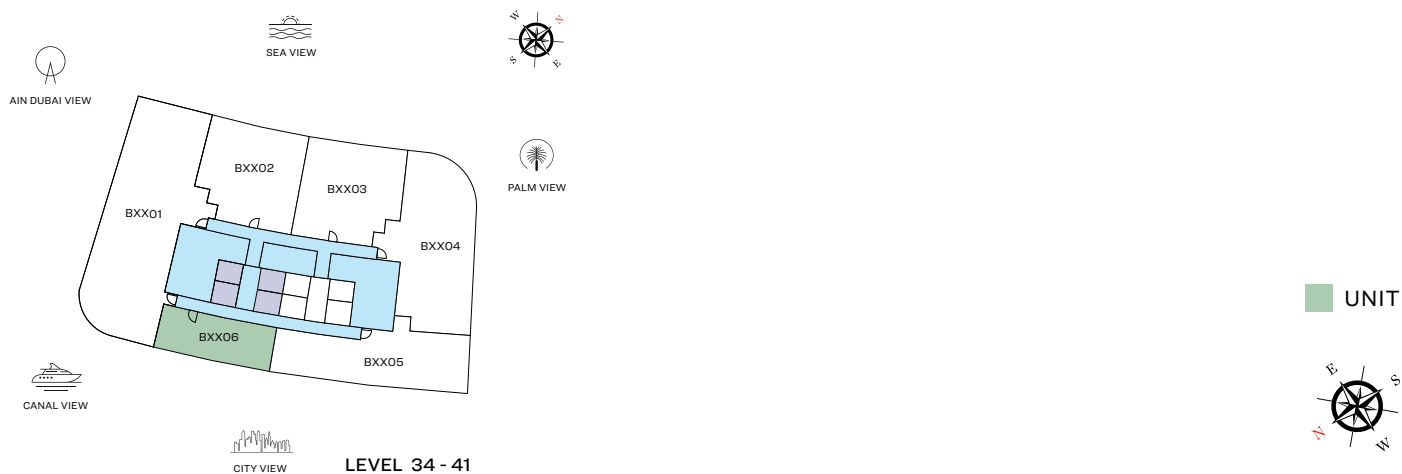
Marina Skyline, Marina
B1107, B1207, B1307, B1407, B1507, B1607, B1707, B1807, B1907,
B2007, B2107, B2207, B2307, B2407, B2507, B2607, B2707,
B2807, B2907, B3007, B3107, B3207

DIMENSIONS (MM)

1 LIVING - 4750 X 3400	3 BEDROOM - 3850 X 3250	4 BALCONY - 4650 X 1700
2 KITCHEN/DINING - 4550 X 3500	3A BATHROOM - 3400 X 1850	5 POWDER - 2100 X 1750
		6 UTILITY - 1050 X 1300

Disclaimer: 1. All dimensions are in metric, measured to wall finishes. 2. All materials, dimensions & drawings are approximate. 3. Information is subject to change without notice, at developer's absolute discretion. 4. Actual area may vary from the stated area. 5. Drawing are not to scale. 6. All images used are for illustrative purpose only and do not represent the actual size, features, specifications, fittings and furnishings. 7. The developer reserves the right to make revisions/ alterations, at its absolute discretion, without any liability whatsoever.

1 BEDROOM APARTMENT
TYPE F (with powder room + balcony)



List of unit numbers with this unit plan:

VIEWS

Marina Skyline, Marina
B3406, B3506, B3606, B3706, B3806, B3906, B4006, B4106

Disclaimer: 1. All dimensions are in metric, measured to wall finishes. 2. All materials, dimensions & drawings are approximate. 3. Information is subject to change without notice, at developer's absolute discretion. 4. Actual area may vary from the stated area. 5. Drawing are not to scale. 6. All images used are for illustrative purpose only and do not represent the actual size, features, specifications, fittings and furnishings. 7. The developer reserves the right to make revisions/ alterations, at its absolute discretion, without any liability whatsoever.

1 BEDROOM APARTMENT

TYPE F (with powder room + balcony)

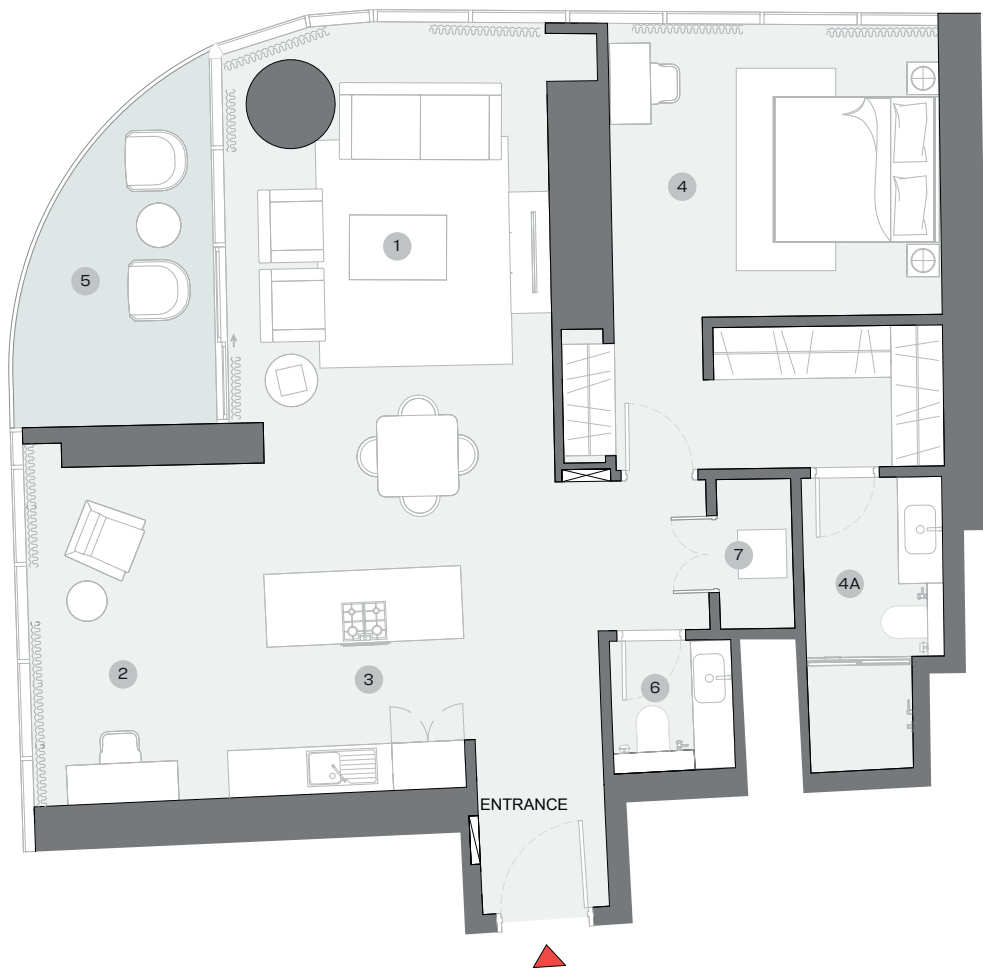
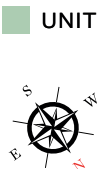
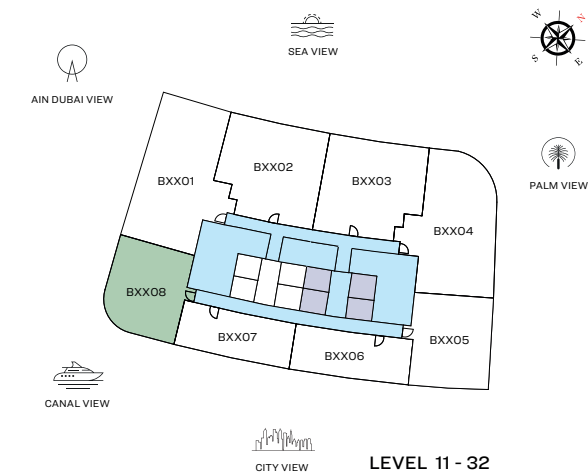
AREAS & DIMENSIONS

		UNIT NO. B3406 SUITE = 754.23 SQ.FT. BALCONY = 95.15 SQ.FT. TOTAL = 849.38 SQ.FT.	UNIT NO. B3506 SUITE = 754.23 SQ.FT. BALCONY = 95.15 SQ.FT. TOTAL = 849.38 SQ.FT.	UNIT NO. B3606 SUITE = 754.23 SQ.FT. BALCONY = 95.15 SQ.FT. TOTAL = 849.38 SQ.FT.	UNIT NO. B3706 SUITE = 754.23 SQ.FT. BALCONY = 95.15 SQ.FT. TOTAL = 849.38 SQ.FT.
DESCRIPTION		DIMENSIONS (MM)	DIMENSIONS (MM)	DIMENSIONS (MM)	DIMENSIONS (MM)
1	LIVING ROOM	4650X3350	4650X3350	4650X3350	4650X3350
2	KITCHEN/DINING ROOM	4350X3450	4350X3450	4350X3450	4350X3450
3	MASTER BEDROOM	3850X3200	3850X3200	3850X3200	3850X3200
3A	M. BEDROOM BATHROOM	3350X1800	3350X1800	3350X1800	3350X1800

		UNIT NO. B3806 SUITE = 754.23 SQ.FT. BALCONY = 95.15 SQ.FT. TOTAL = 849.38 SQ.FT.	UNIT NO. B3906 SUITE = 754.23 SQ.FT. BALCONY = 95.15 SQ.FT. TOTAL = 849.38 SQ.FT.	UNIT NO. B4006 SUITE = 754.23 SQ.FT. BALCONY = 95.15 SQ.FT. TOTAL = 849.38 SQ.FT.	UNIT NO. B4106 SUITE = 754.23 SQ.FT. BALCONY = 95.15 SQ.FT. TOTAL = 849.38 SQ.FT.
DESCRIPTION		DIMENSIONS (MM)	DIMENSIONS (MM)	DIMENSIONS (MM)	DIMENSIONS (MM)
1	LIVING ROOM	4650X3350	4650X3350	4650X3350	4650X3350
2	KITCHEN/DINING ROOM	4350X3450	4350X3450	4350X3450	4350X3450
3	MASTER BEDROOM	3850X3200	3850X3200	3850X3200	3850X3200
3A	M. BEDROOM BATHROOM	3350X1800	3350X1800	3350X1800	3350X1800

1 BEDROOM + STUDY APARTMENT
TYPE G (with powder room + balcony)

TOTAL SALEABLE AREA
SUITE = 1,086.46 SQ.FT.
BALCONY = 104.15 SQ.FT.
TOTAL = 1,190.62 SQ.FT.



List of unit numbers with this unit plan:

VIEWS

Marina, Marina Skyline, Sea
B1108, B1208, B1308, B1408, B1508, B1608, B1708, B1808, B1908,
B2008, B2108, B2208, B2308, B2408, B2508, B2608, B2708,
B2808, B2908, B3008, B3108, B3208

DIMENSIONS (MM)

1 LIVING/DINING - 4000 X 6650	4 BEDROOM - 4100 X 3550	5 BALCONY
2 STUDY - 2650 X 4100	4A BATHROOM - 1750 X 3600	6 POWDER - 1500 X 1600
3 KITCHEN - 2650 X 2700		7 UTILITY - 900 X 1850

Disclaimer: 1. All dimensions are in metric, measured to wall finishes. 2. All materials, dimensions & drawings are approximate. 3. Information is subject to change without notice, at developer's absolute discretion. 4. Actual area may vary from the stated area. 5. Drawing are not to scale. 6. All images used are for illustrative purpose only and do not represent the actual size, features, specifications, fittings and furnishings. 7. The developer reserves the right to make revisions/ alterations, at its absolute discretion, without any liability whatsoever.

SOBHA
REALTY