

CONSTRUCTION UPDATE
DECEMBER 2024

SOBHA
REALTY

Dear Valued Partner,

We are excited to share the latest construction updates of all
our ongoing projects.



THE S

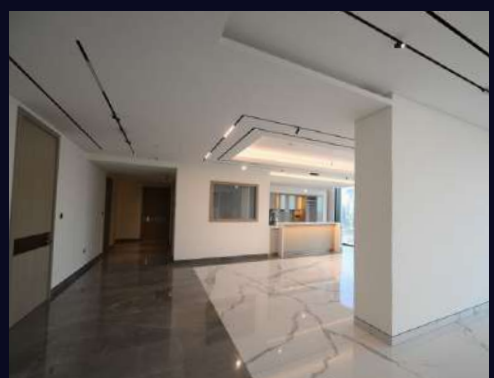
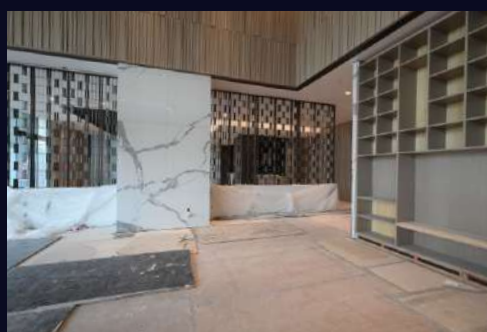
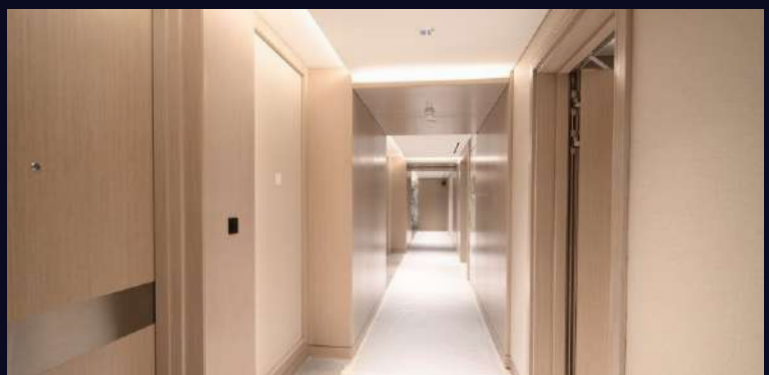
DESIGN *to* COMPLETION



Construction of the project is proceeding favourably well.
The RCC structural frame is complete. The Balcony ACP works in progress in Levels 47 to 51 with tilling Works in progress from levels 47 to 52. Joinery Works are in progress from level 47 to 51 and false ceiling grid works in progress in levels 52 to 54. Also the amenities are in process at Level 1.



Development Progress



SOBHA
REALTY



THE CREST

DESIGN COMPLETION



Construction of the project is proceeding favourably well. The structural work is now complete across all towers. Building exterior envelops works are in progress across different levels at each tower. The MEP final fixtures & final coat painting works in apartments are in progress with joinery & sky garden area works and Lift internal finishes.



Development Progress



SOBHA
REALTY



CREEK VISTAS

GRANDE

DESIGN COMPLETION



Construction of the project has been completed.
The RCC structural frame & building external envelope works is complete. BCC is received and home orientation is in progress.



Development Progress



SOBHA
REALTY



CREST

GRANDE

DESIGN *to* COMPLETION



Construction of the project is proceeding favourably well. Structure works have been completed across the 3 towers also the miscellaneous concrete works are completed. Building external envelope works are in progress across different levels in each tower. Blockwork, plastering and MEP high-level works with Floor tiling, wall tiling & false ceiling are in progress. The plastering & painting works in service rooms & staircases are in progress.



Development Progress



SOBHA
REALTY





CREEK VISTAS HEIGHTS

DESIGN / COMPLETION



Construction of the project is proceeding favourably well. The slab works at level 27 in Tower A & at level 29 in Tower B with building external envelope works are in progress. Blockwork and plaster works, High-level MEP and Wet area works are in progress.

STRUCTURE



52 %

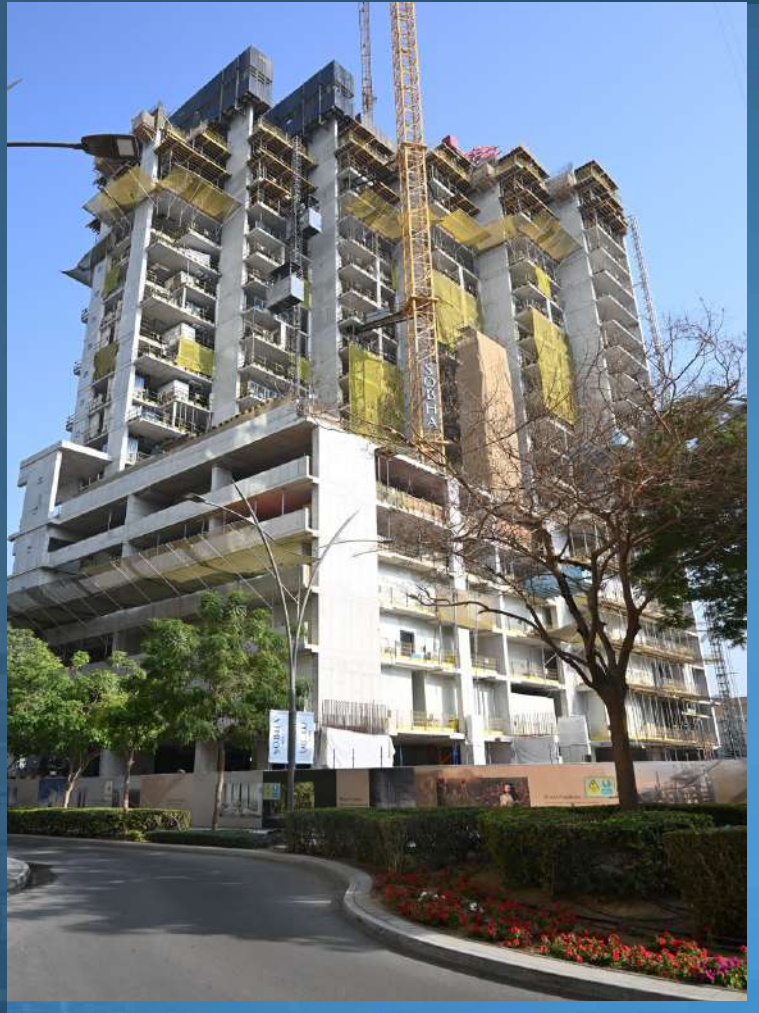
Development Progress



SOBHA
REALTY



DESIGN *TO* COMPLETION



Construction of the project is proceeding favourably well. The Level 21 slab works are in progress with Blockwork & plaster, high-level MEP and wet area works are in progress. Façade work is yet to commence.

STRUCTURE



53 %

Development Progress





SOBHA ONE

DESIGN *to* COMPLETION



Construction of the project is proceeding favourably well. Structural work for Tower A, has been completed till Level 24, till Level 18 for Tower B, till Level 10 for Tower C, till Level 13 for Tower D and till Level 24 for Tower E. Lift & sliding door installation and window wall installation in progress. Slab conduiting works in progress as per slab casting. Blockwork and plastering works in progress. High-level MEP works, and wet area works are in progress in Tower A & tower E.

STRUCTURE



68 %

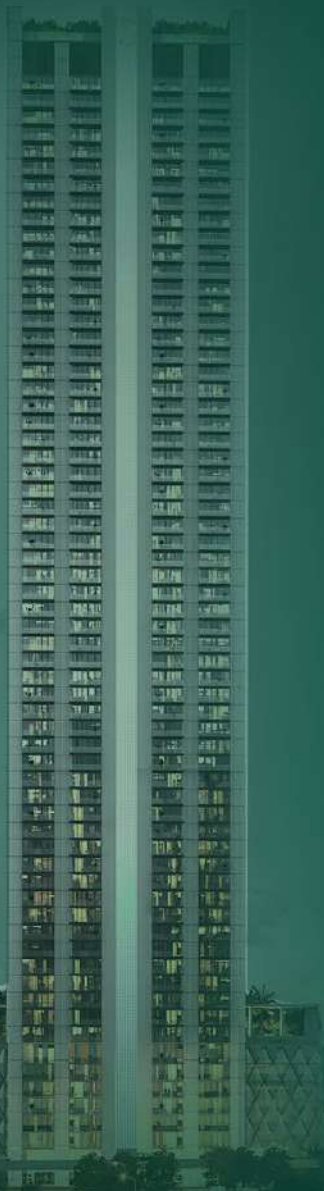
Development Progress



SOBHA
REALTY



DESIGN *To* COMPLETION



Construction of the project is proceeding favourably well.
The Level 14 slab works in progress. Façade & Internal finishes work are yet to commence.

STRUCTURE



35 %

Development Progress





SOBHA RESERVÉ

DESIGN *to* COMPLETION

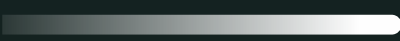


Construction of the project is proceeding favourably well for villa series SRV-1 to SRV-76, SRV-79 to SRV-80, SRV-82, SRV-84, SRV-86, SRV-88 to SRV-104, SRV-106, SRV-108, SRV-110, SRV-112, SRV-114, SRV-138 to SRV-174, SRV-201 to SRV-215, SRV-301 to SRV-322, SRV-401 to SRV-409, SRV-412 to SRV-431, SRV-701 to SRV-723, SRV-725 to SRV-736 and SRV-801 to SRV-826

The excavation is completed in 267 Villas. PCC has been completed in 258 Villas, raft casting is completed in 230 villas, grade slab is completed in 159 villas, First floor is completed in 110 villas, Roof floors are completed in 102 villas, and Upper roofs are completed in 93 villas.

Façade works is in progress in 12 villas. Blockwork is completed in 63 Villas. Plastering is completed in 40 villas. MEP high level is completed in 24 villas, false ceiling has been completed in 16 villas, floor tiling is completed in 8 villas and joinery works in 10 villas

STRUCTURE



44%

Development Progress



SOBHA
REALTY





SOBHA SEAHAVEN

DESIGN / COMPLETION



Raft works completed & verticals in progress in Tower A. Enabling works in progress at Tower B and raft works in progress a Tower C. Façade and internal finishes works are yet to commence.

STRUCTURE



14 %

Development Progress



SOBHA
REALTY





SOBHA HARTLAND II ESTATES

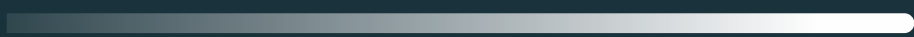
DESIGN COMPLETION



Construction of the project is proceeding favourably well for villa series V113 to V123, V126 to V147 & V150 to V159.

Superstructure and upper roof slab completed. Façade works are in progress. MEP works, Blockwork & plastering with False ceiling works, screed, waterproofing, combo roof works, tiling, and epoxy paint are in progress. External works are also in progress.

STRUCTURE



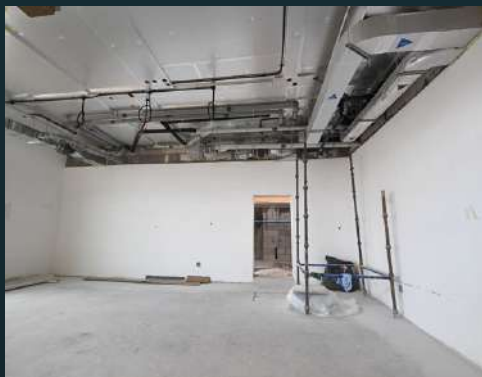
100 %

INTERNAL
FINISHES



37 %

Development Progress



SOBHA
REALTY





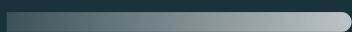
SOBHA HARTLAND II ESTATES

DESIGN COMPLETION



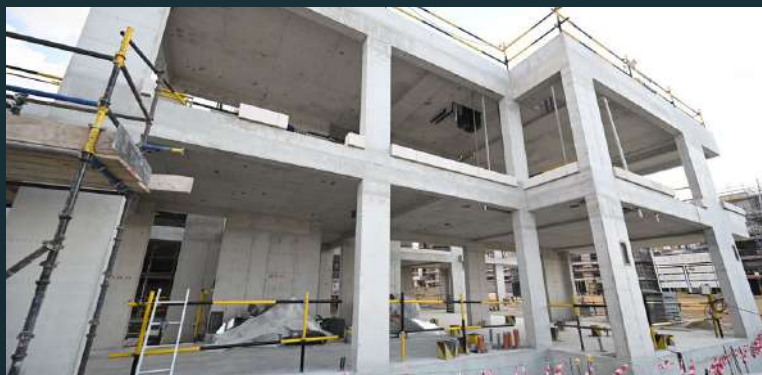
Construction of the project is proceeding favourably well for villa series V101 to V110, V112, V124, V125, V148, V149 & V160. Structural works are in progress. Façade and internal finishes work are yet to commence.

STRUCTURE



38 %

Development Progress



SOBHA
REALTY



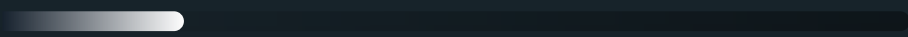
310 RIVERSIDE CRESCENT

DESIGN *to* COMPLETION



Construction of the project is proceeding favourably well. Ground floor slab works have been completed and ground floor to L1 verticals are in progress. Works are yet to commence in the façade and for internal finishes.

STRUCTURE



20 %

Development Progress



SOBHA
REALTY



320 RIVERSIDE CRESCENT

DESIGN *to* COMPLETION



Construction of the project is proceeding favourably well. L1 slab works are in progress. Façade and Internal finishing works are yet to commence.

STRUCTURE



25 %

Development Progress



SOBHA
REALTY



330 RIVERSIDE CRESCENT

DESIGN *to* COMPLETION



Construction of the project is proceeding favourably well. L1 slab work and Podium raft are completed, L2 slab works in progress. Façade and Internal finishing works are yet to commence.

STRUCTURE



26 %

Development Progress



SOBHA
REALTY



340 RIVERSIDE CRESCENT

DESIGN *to* COMPLETION



Construction of the project is proceeding favourably well. Ground floor slabs have been completed, and ACS installations are in progress. Works are yet to commence for the façade and for internal finishes.

STRUCTURE

22 %

Development Progress



SOBHA
REALTY



350 RIVERSIDE (RESCENT

DESIGN COMPLETION



Construction of the project is proceeding favourably well. GF to L1 verticals and ACS installations have been completed with L1 to L2 verticals are in progress. Works are yet to commence for the façade and for internal finishes.

STRUCTURE 

22 %

Development Progress



SOBHA
REALTY



360 RIVERSIDE CRESCENT

DESIGN COMPLETION



Construction of the project is proceeding favourably well. Basement to GF verticals with retaining wall works are in progress. Works are yet to commence in the façade and for the internal finishes.

STRUCTURE



20 %

Development Progress



SOBHA
REALTY



SOBHA

REALTY